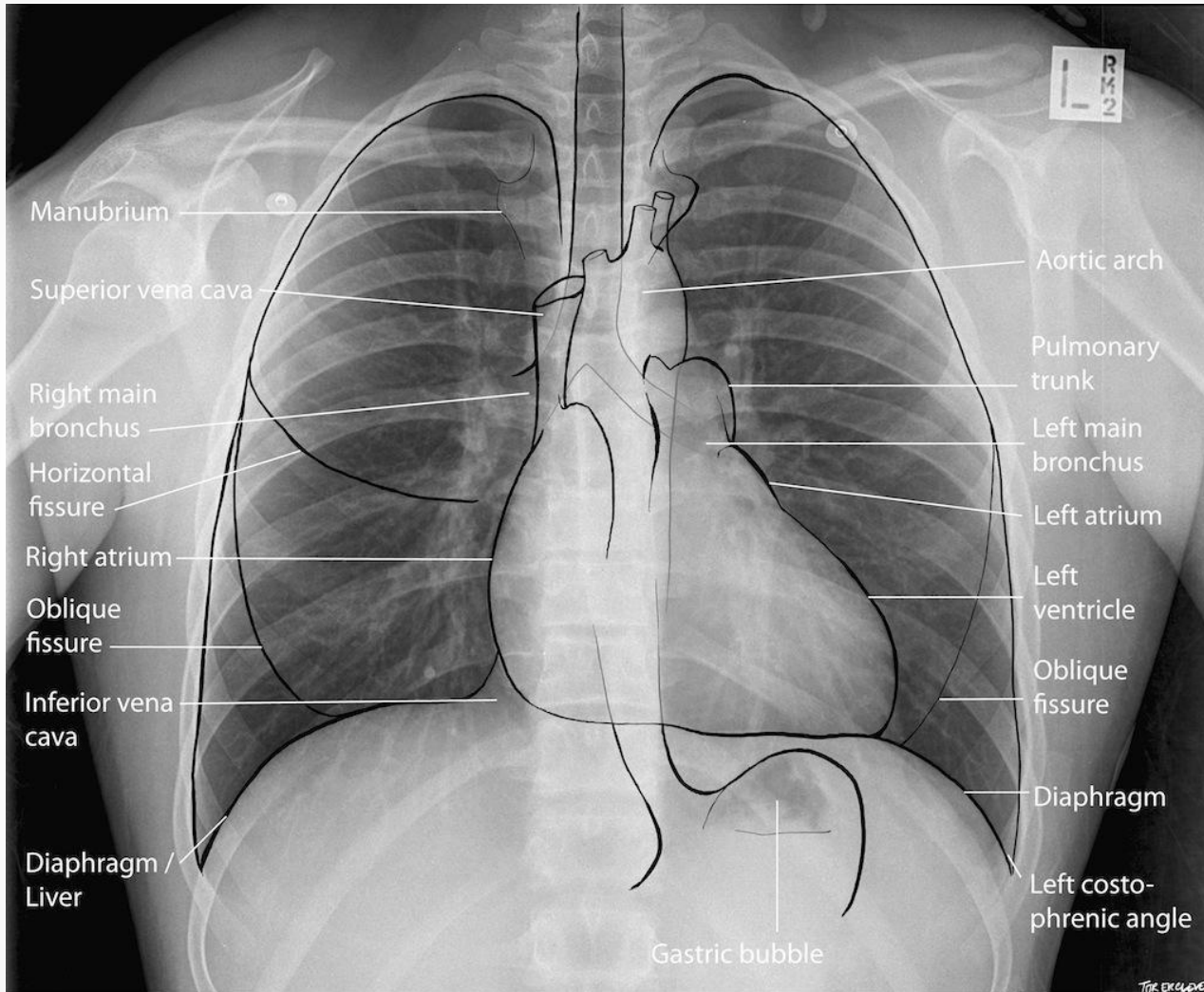


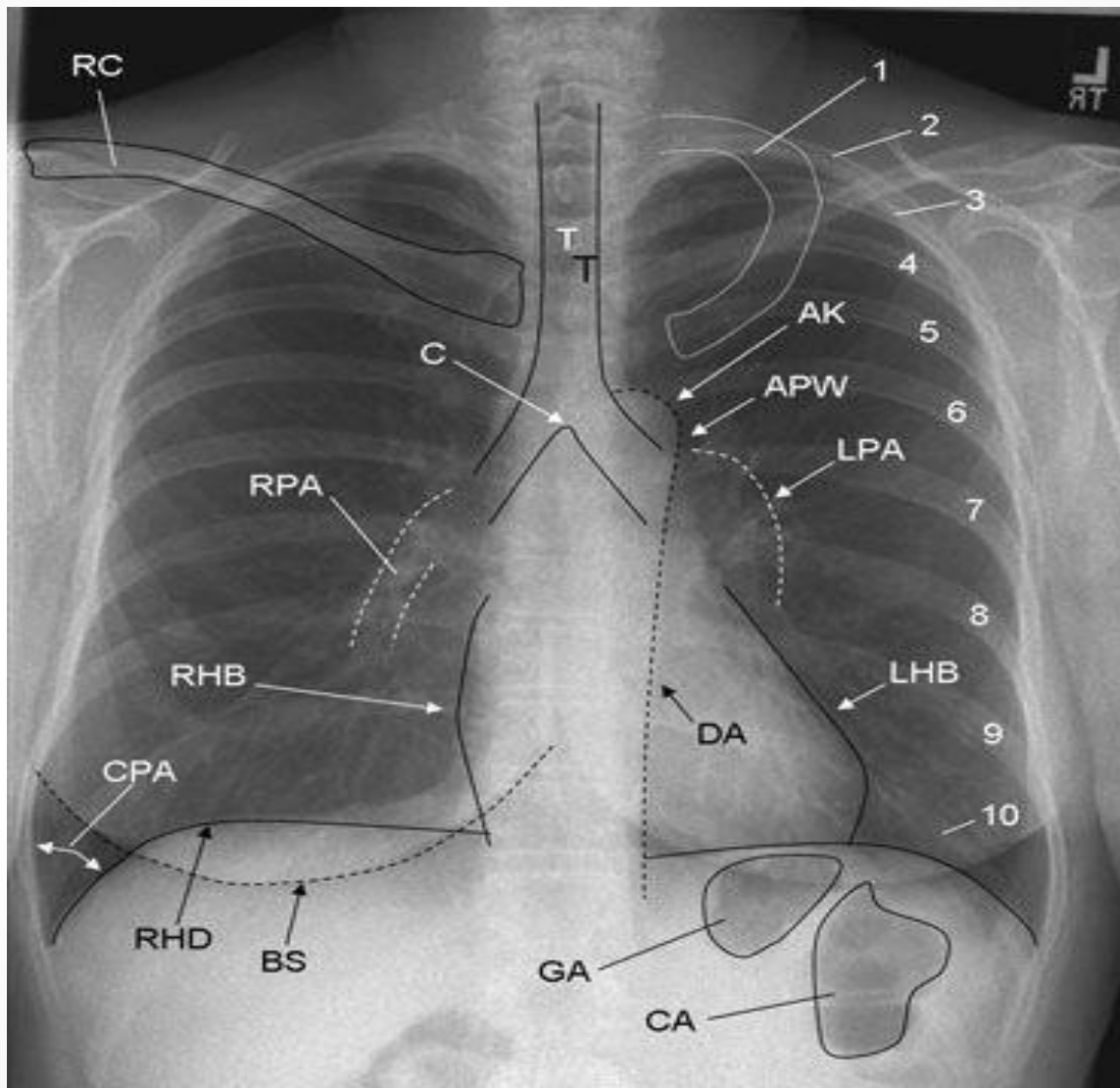
# 1년차가 알아야 할 흉부영상

이성수

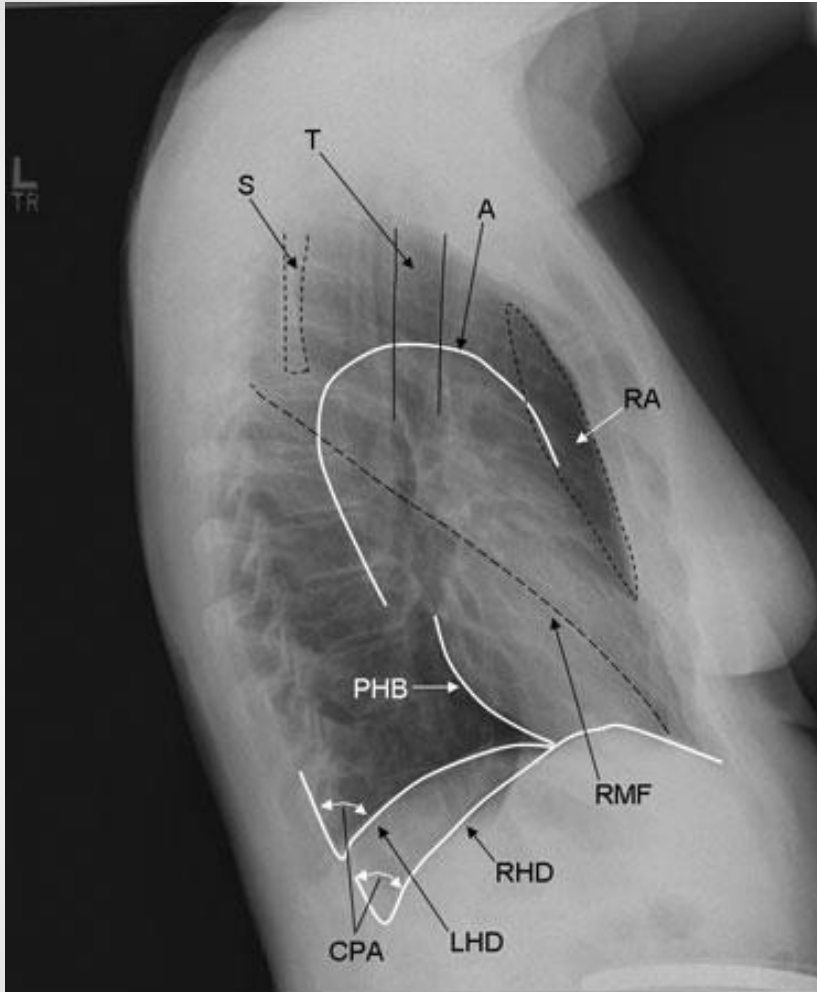
연세대학교 강남세브란스병원

흉부외과

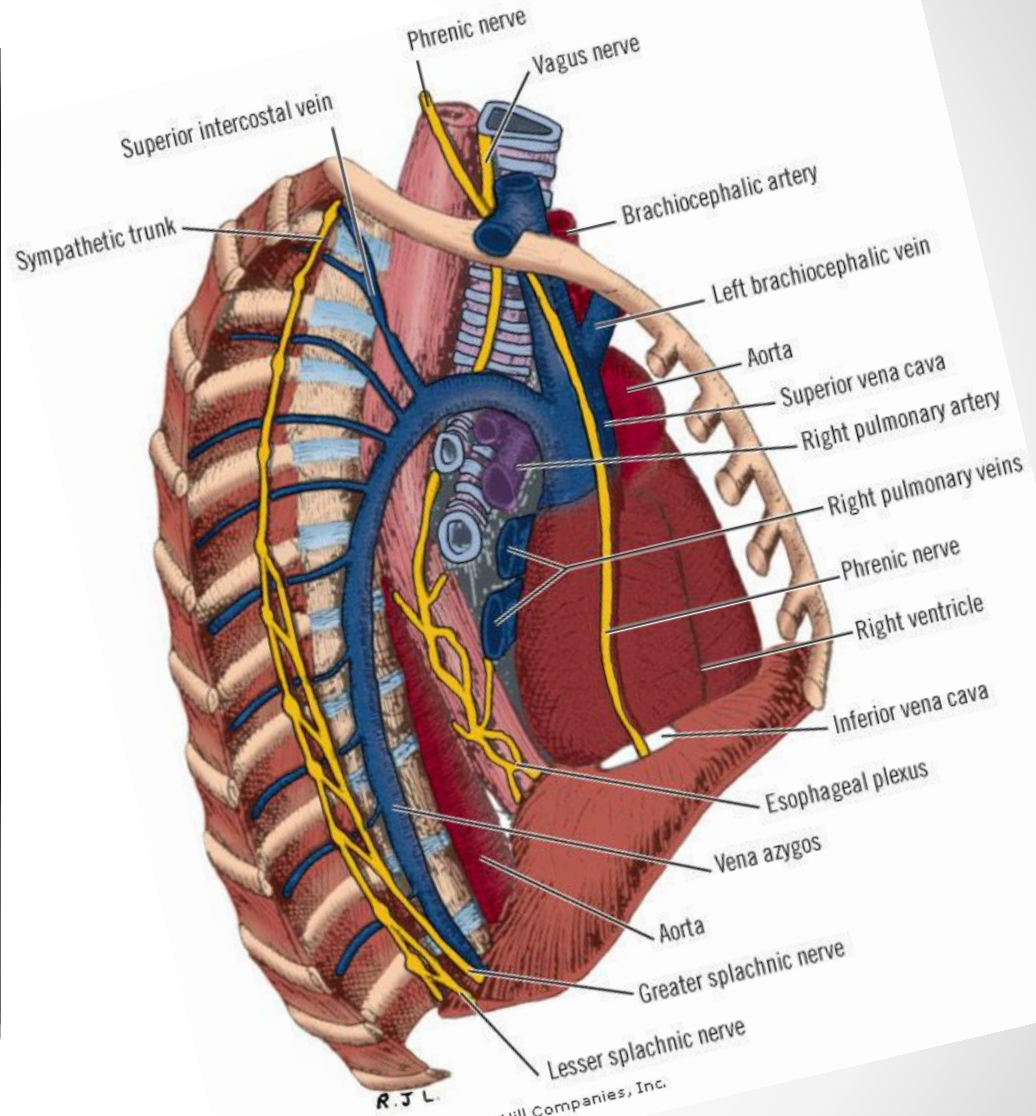




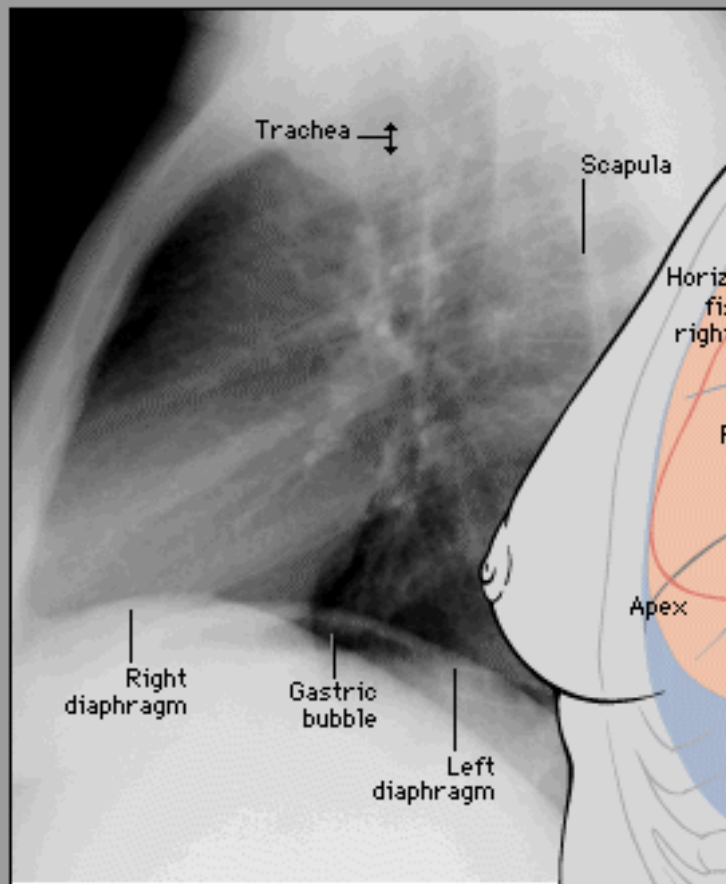
Copyright ©2006 by The McGraw-Hill Companies, Inc.  
All rights reserved.



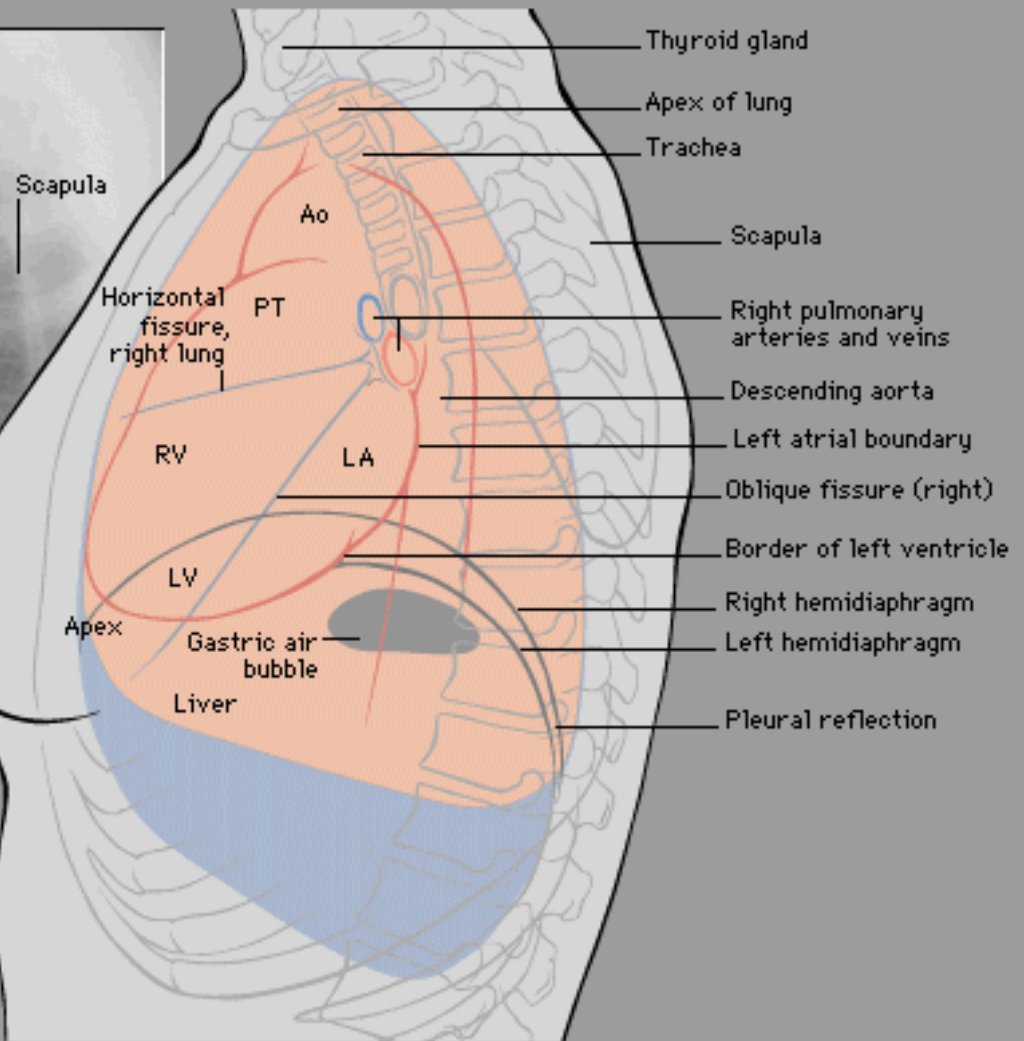
Copyright ©2006 by The McGraw-Hill Companies, Inc.  
All rights reserved.



R J L.  
Copyright ©2006 by The McGraw-Hill Companies, Inc.  
All rights reserved.



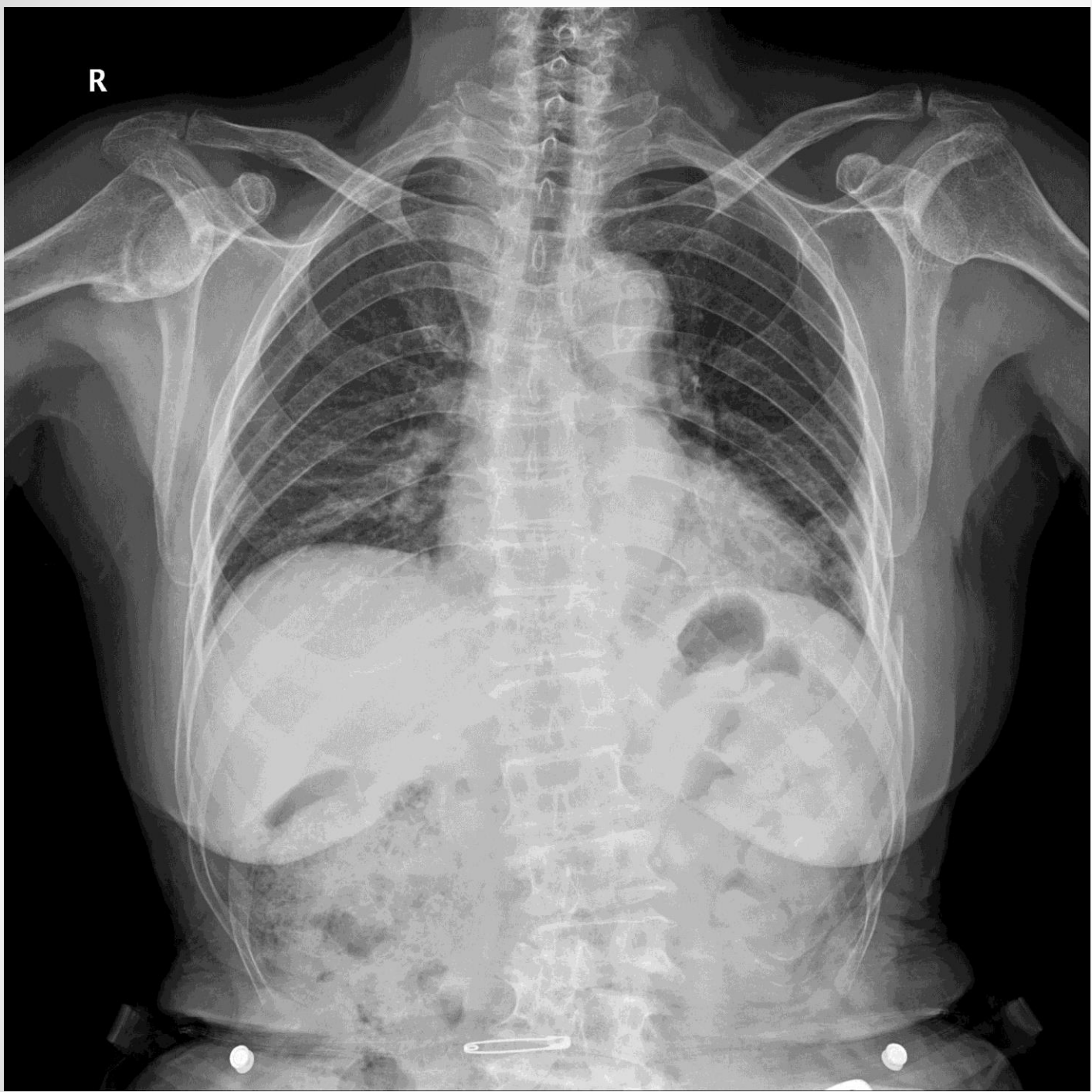
Note breast shadow on female patients

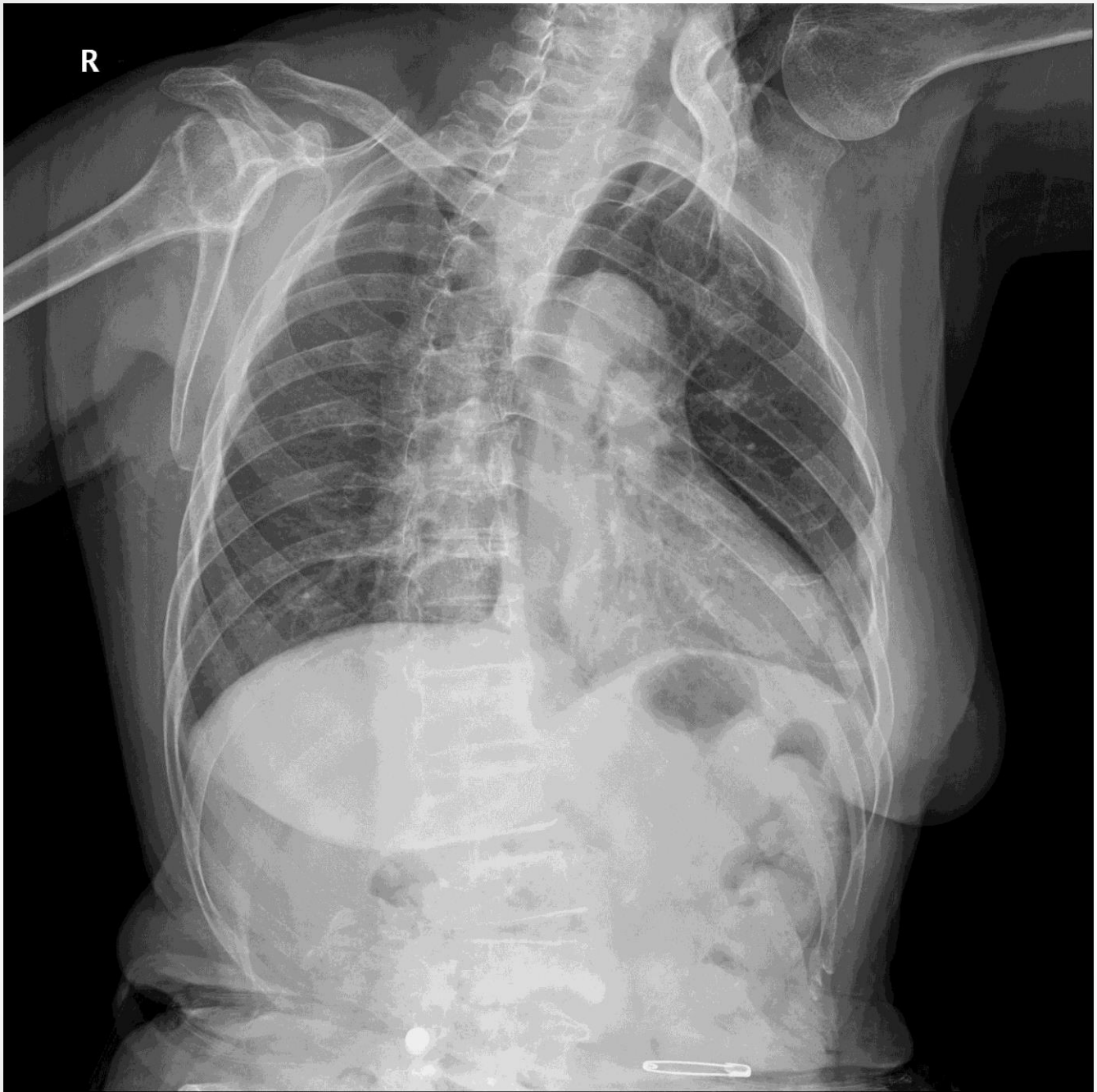


# chapter 1

- Rib Fx.
- Pneumothorax
- Pleural effusion

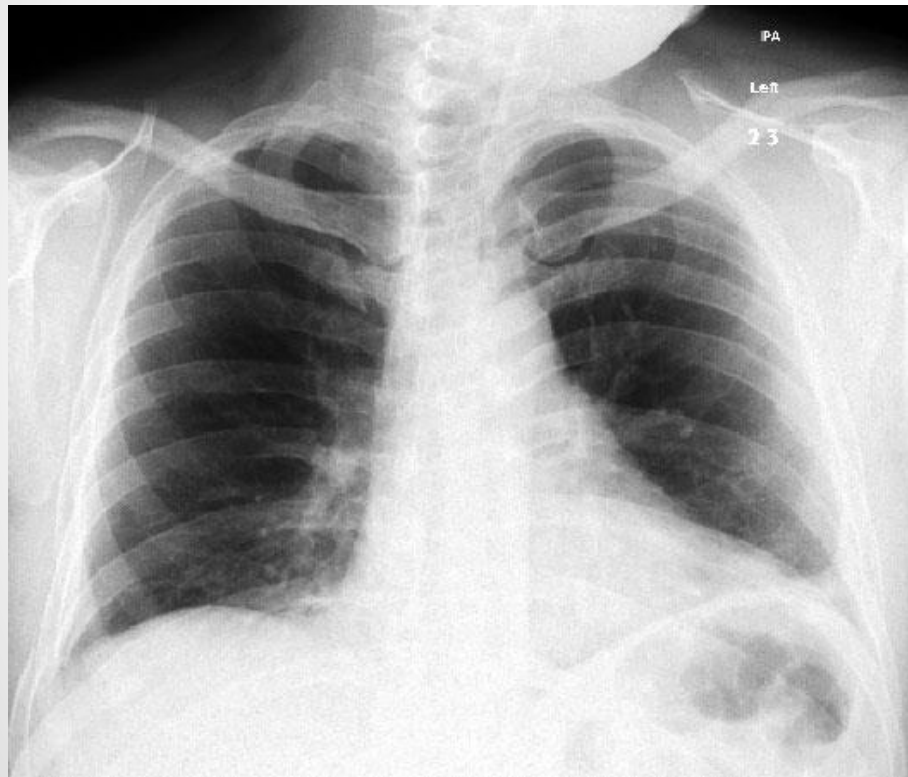
R



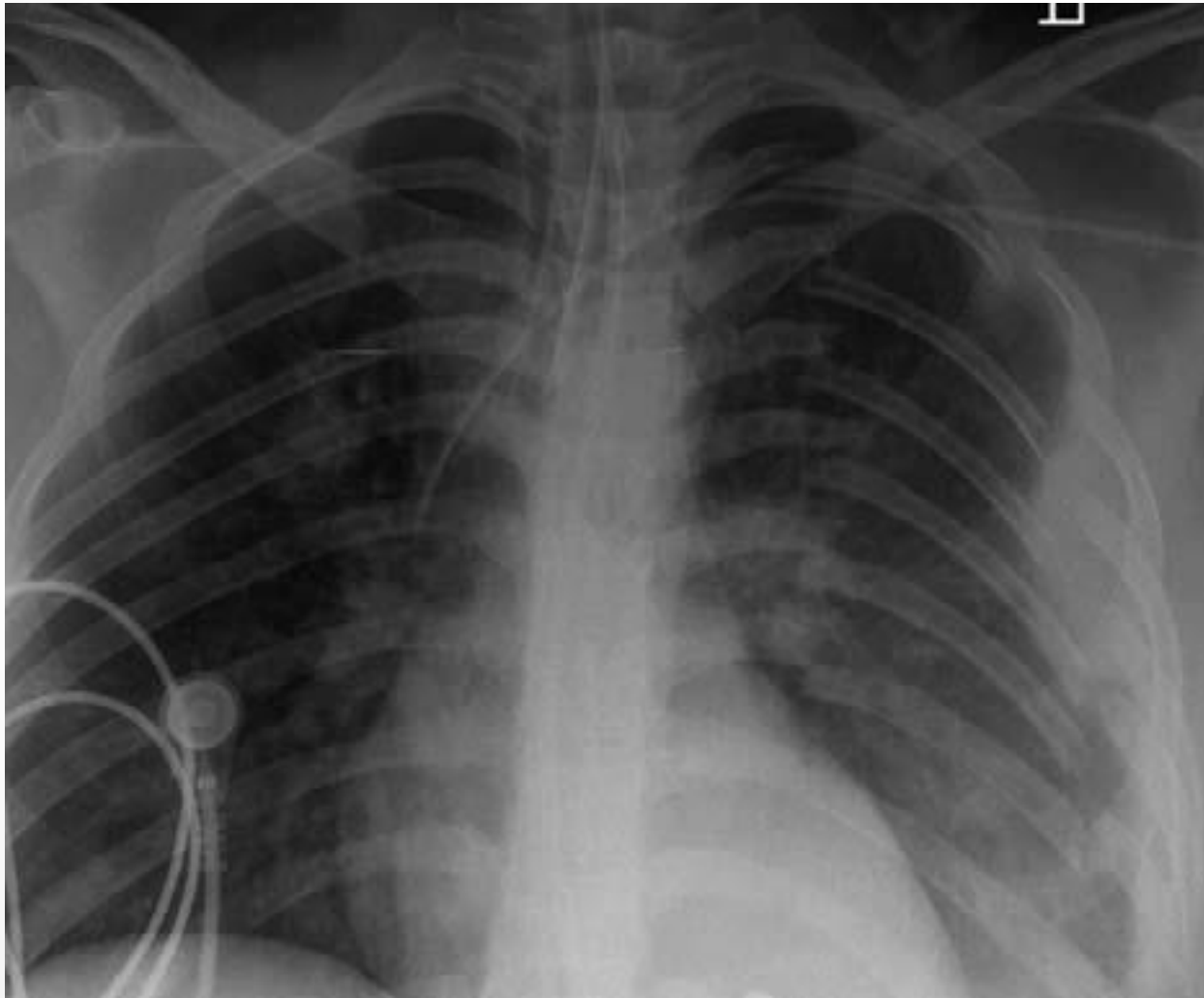




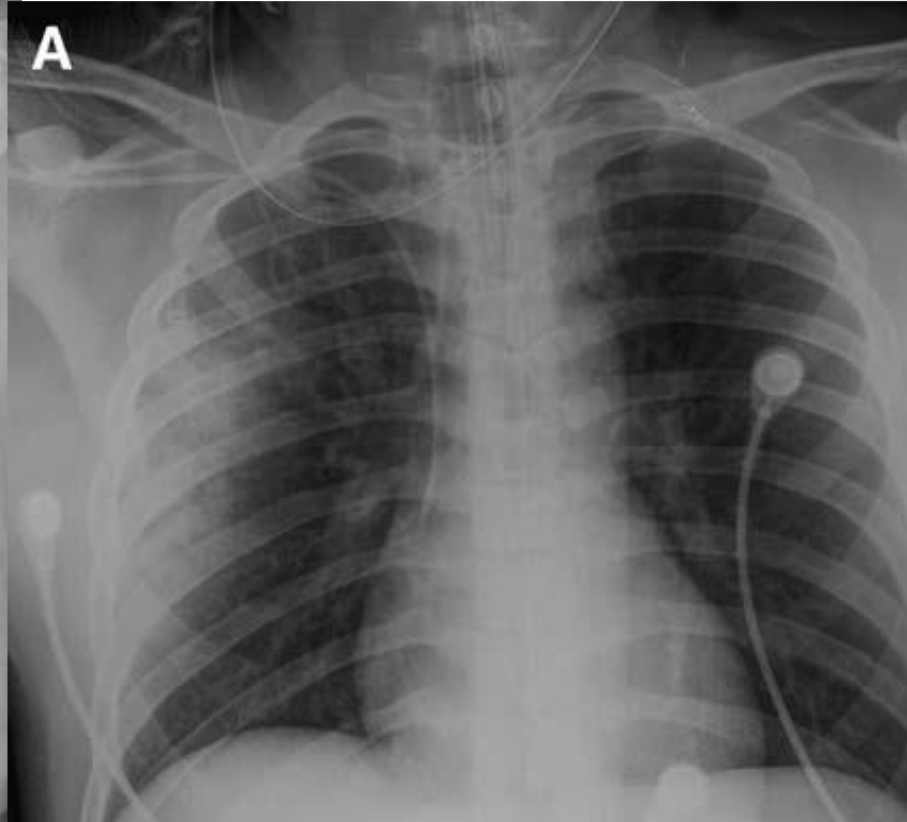
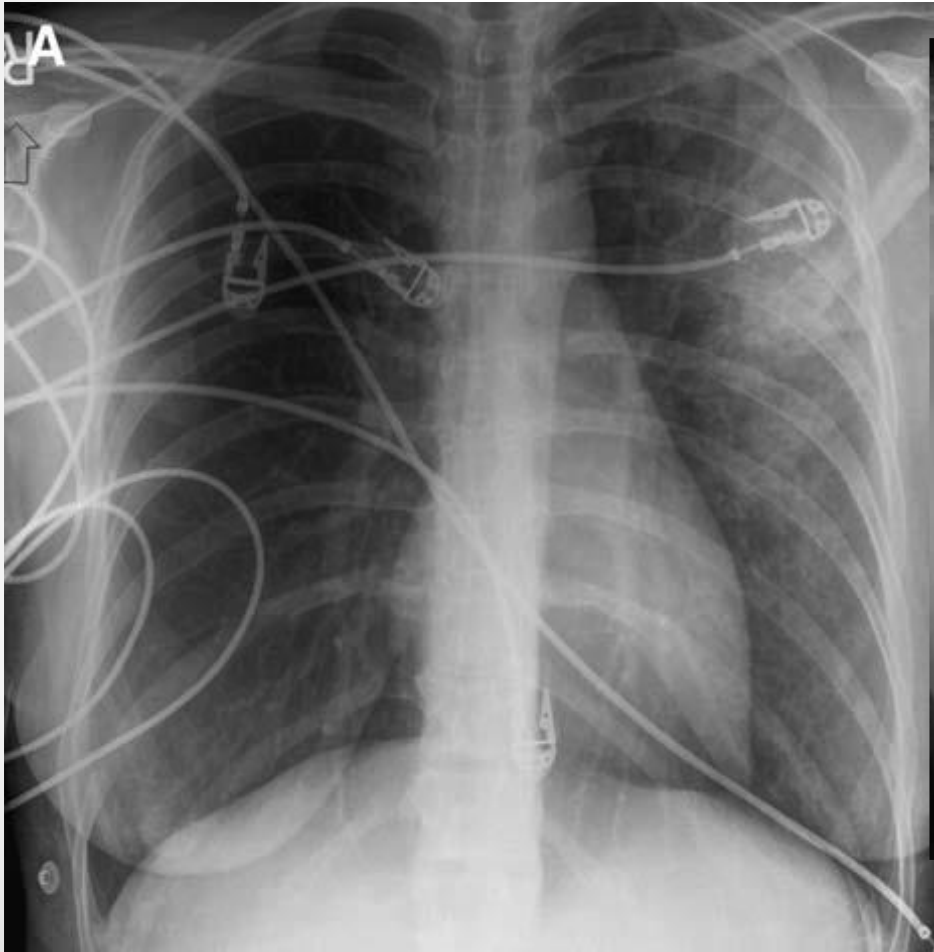
# Rib fracture - single



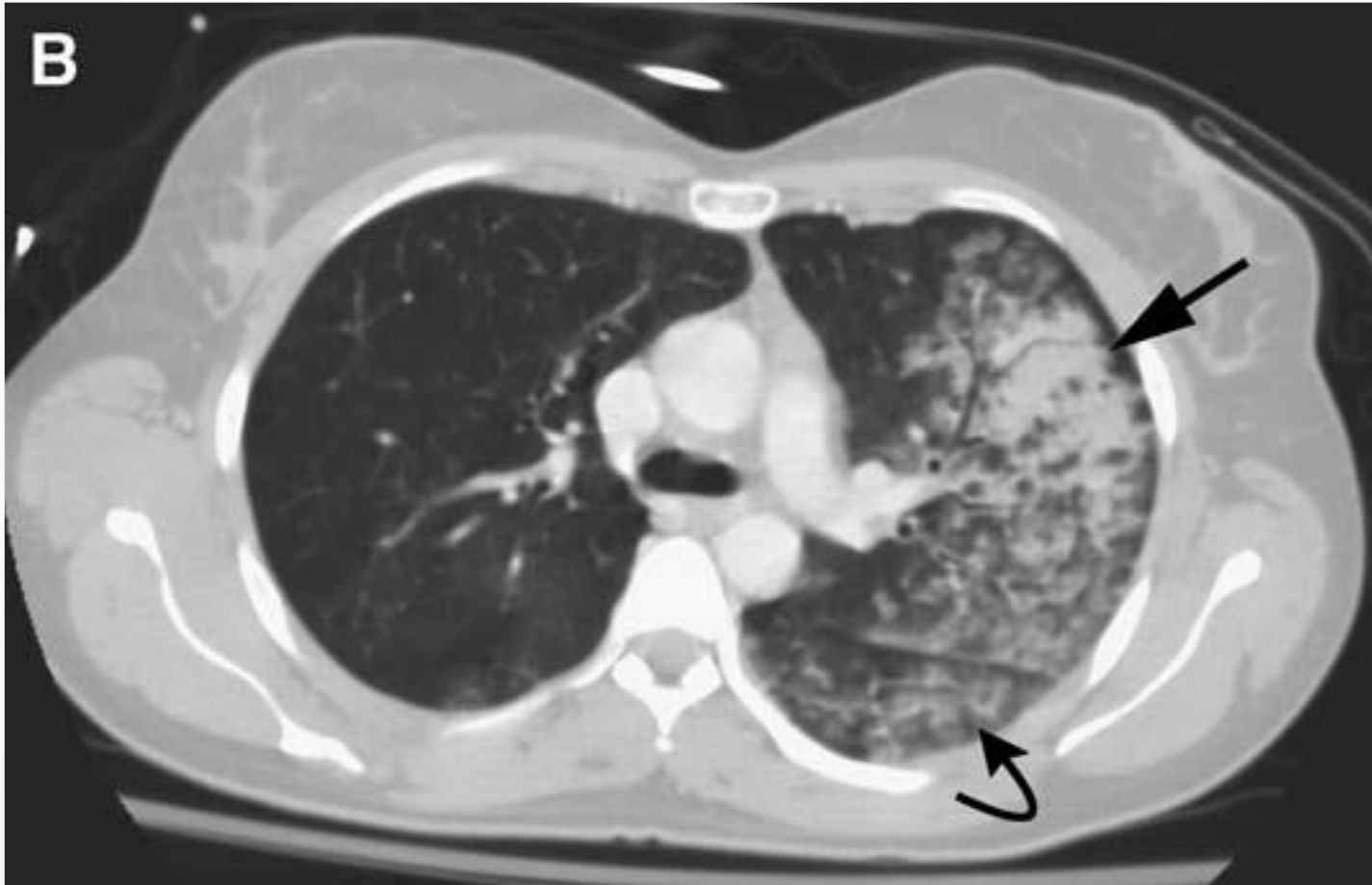
# Rib fracture - multiple



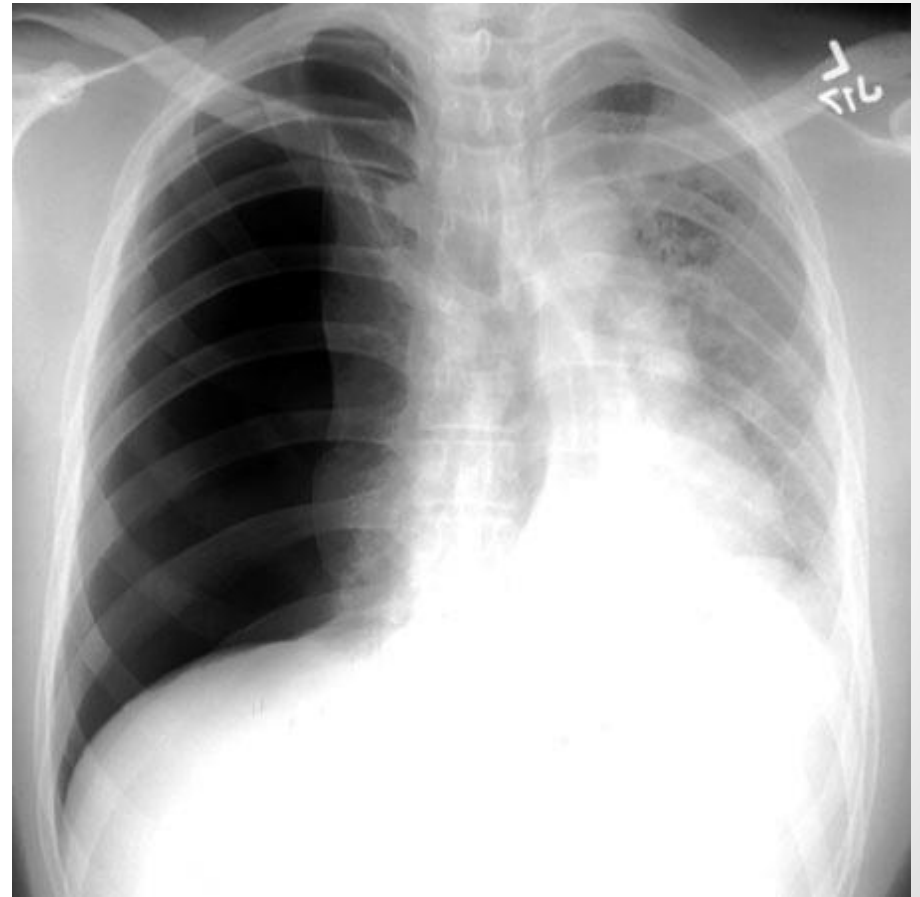
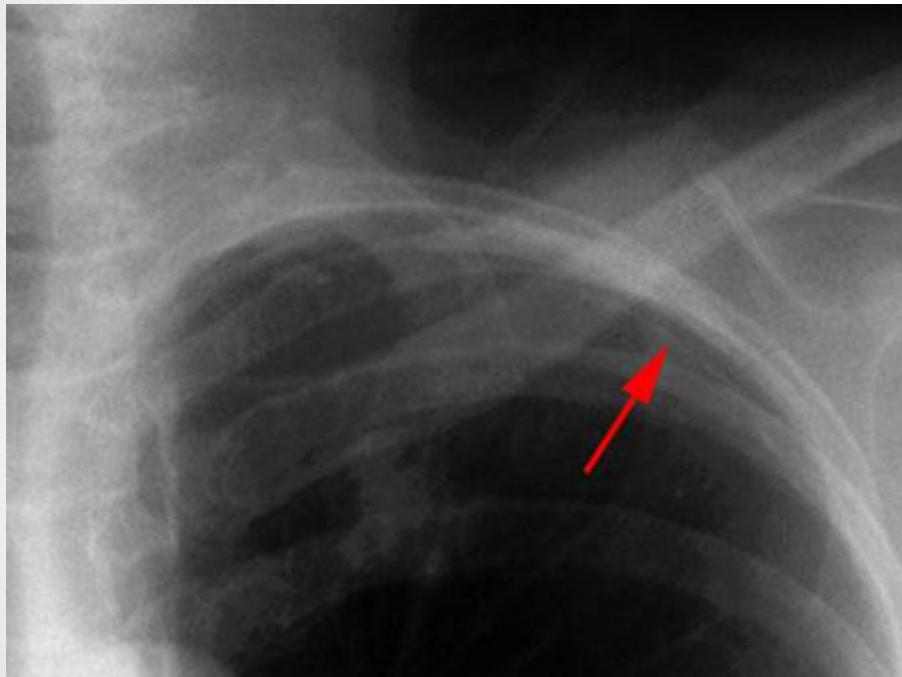
# Lung contusion



# Lung contusion



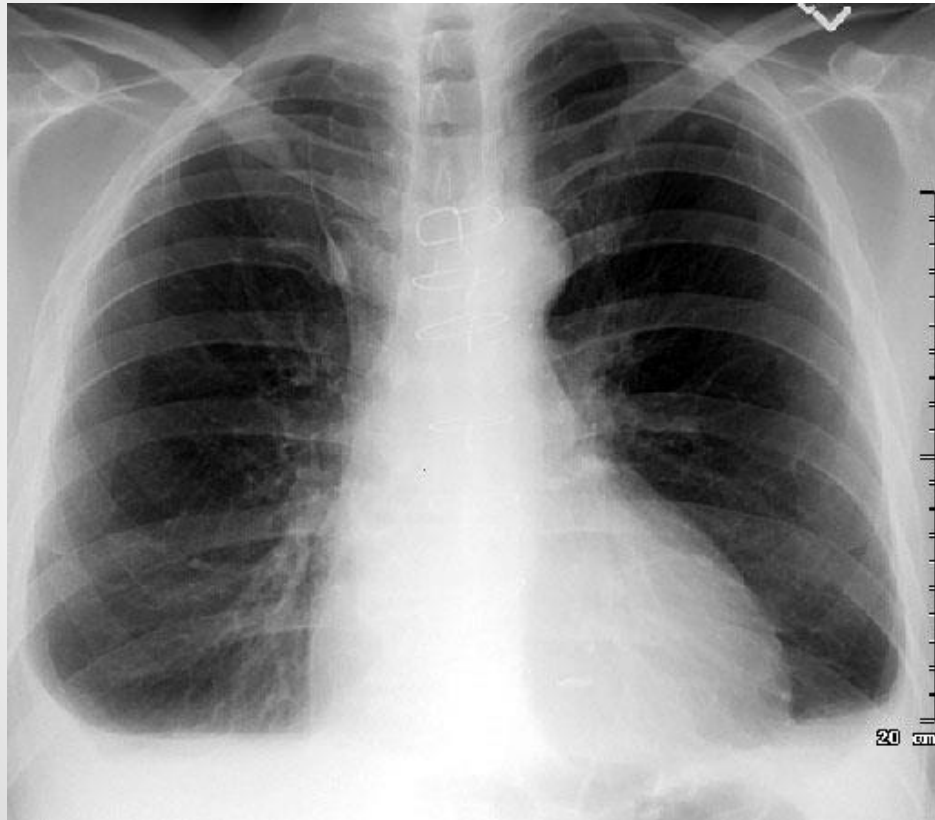
# Pneumothorax



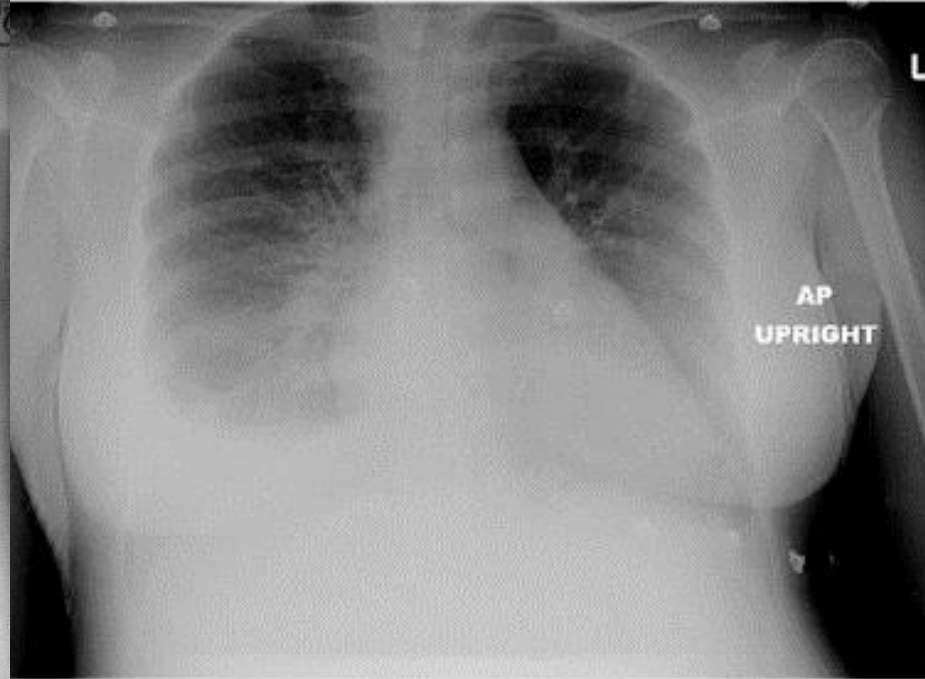
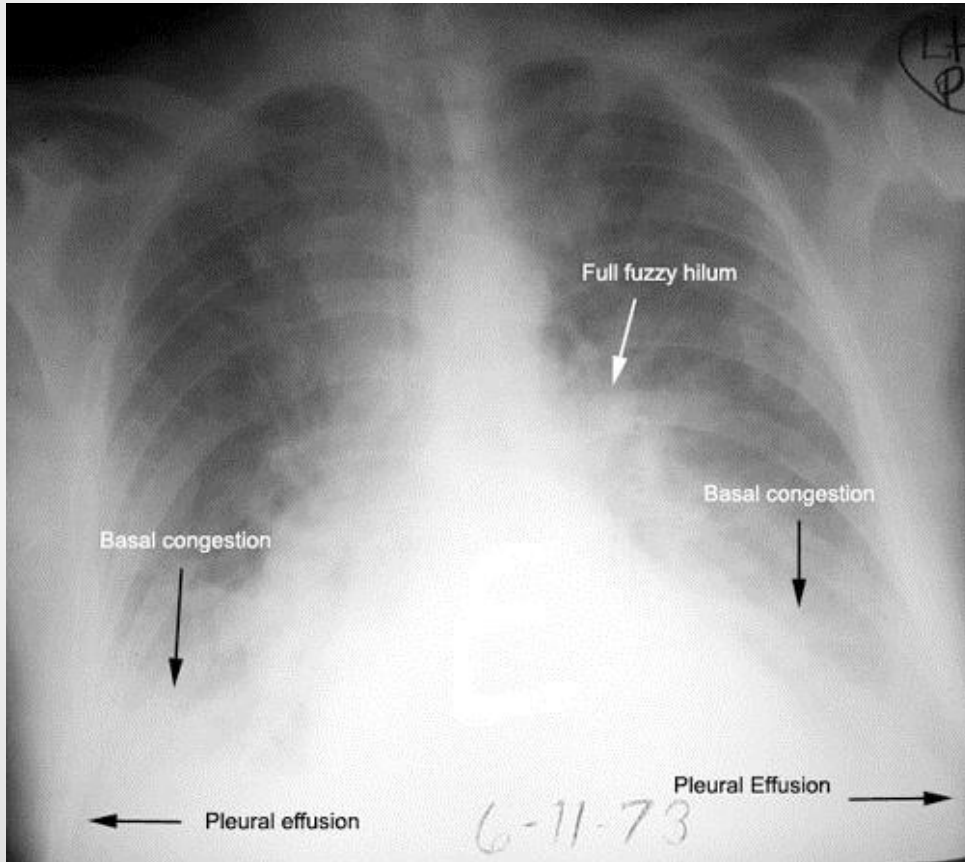
# Hydropneumothorax



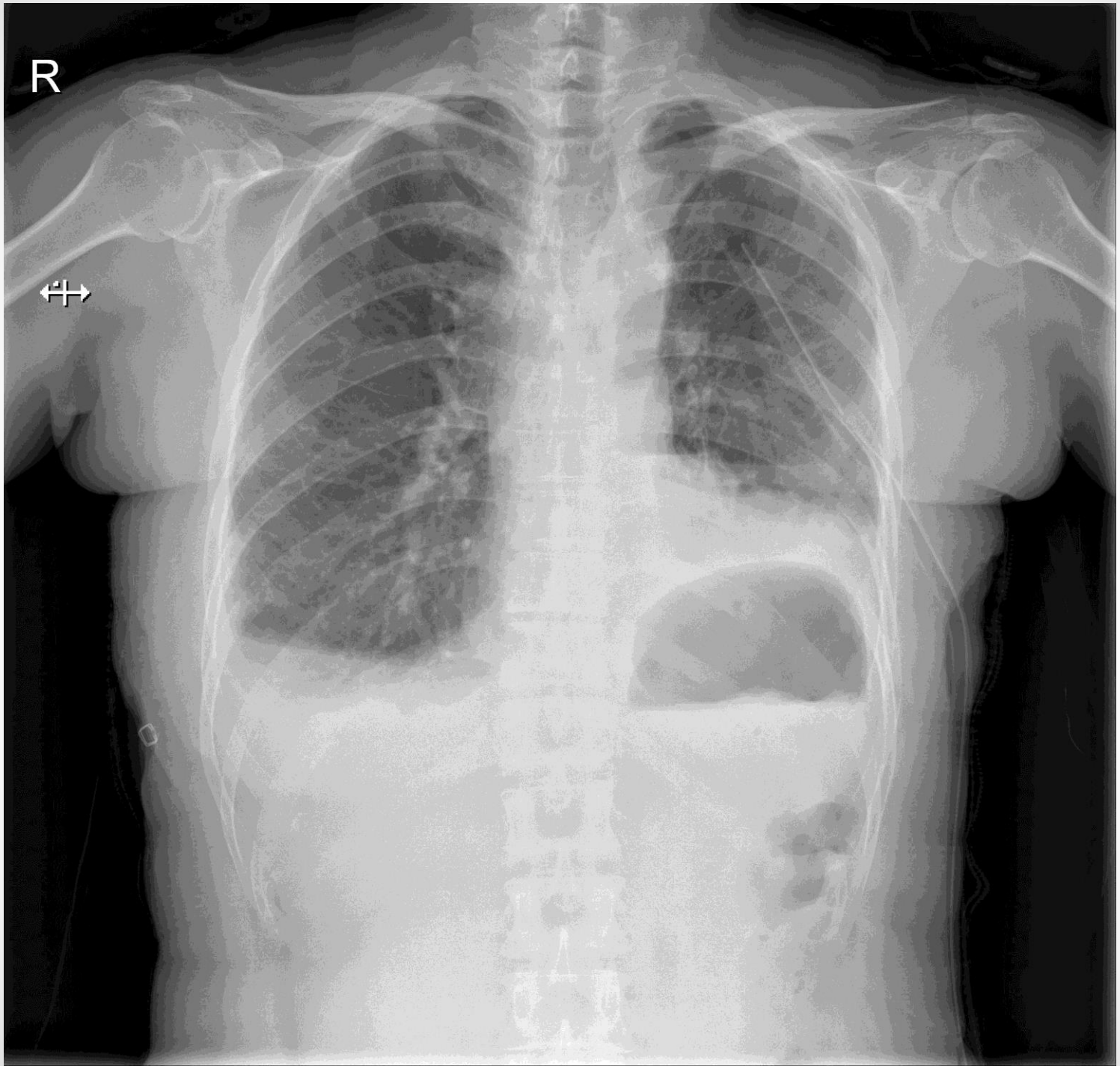
# Pleural effusion - chest PA



# Pleural effusion - chest AP











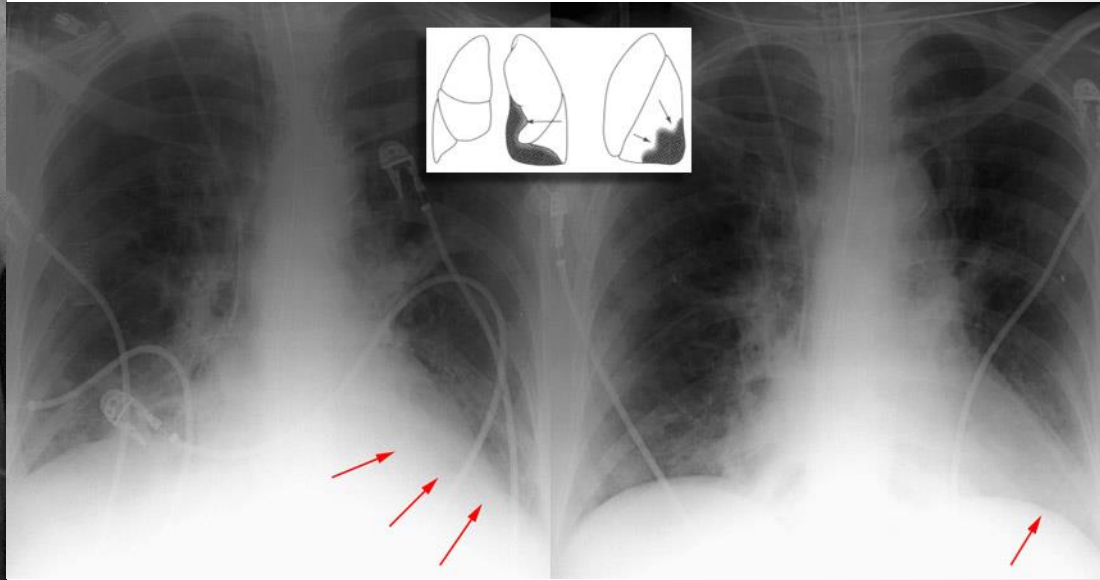
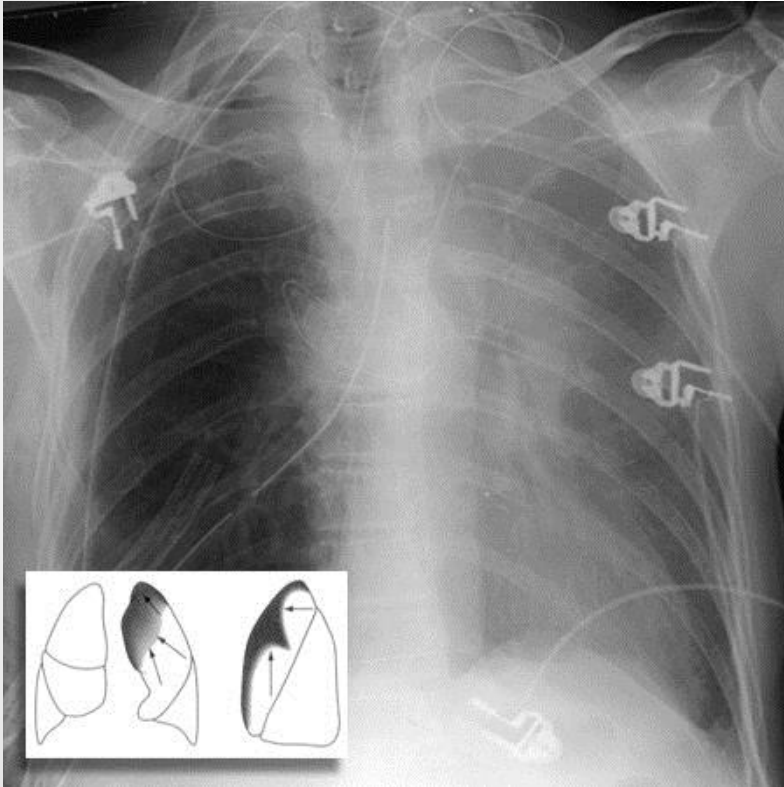
# chapter 2 Lung

Atelectasis

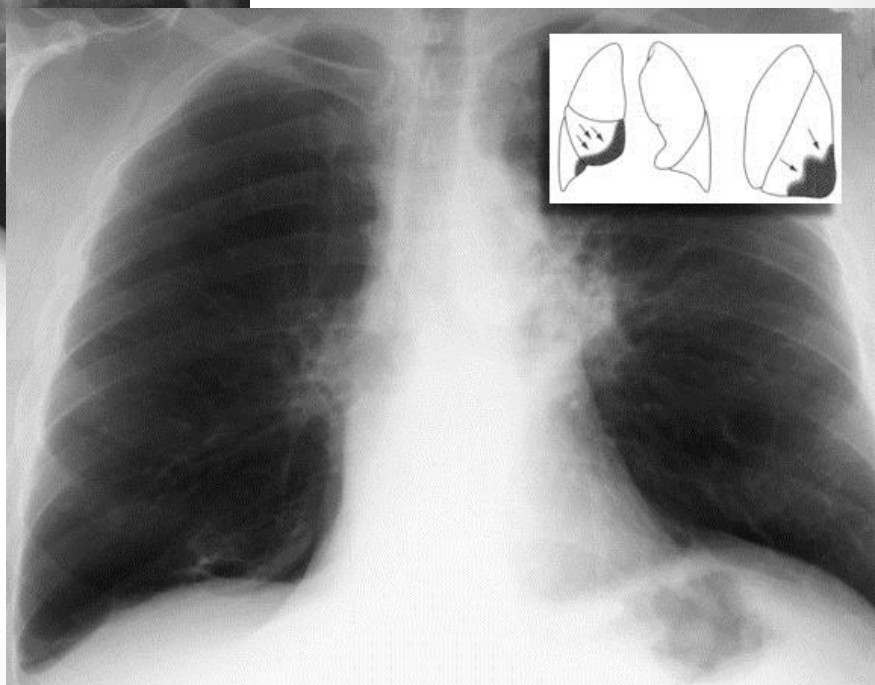
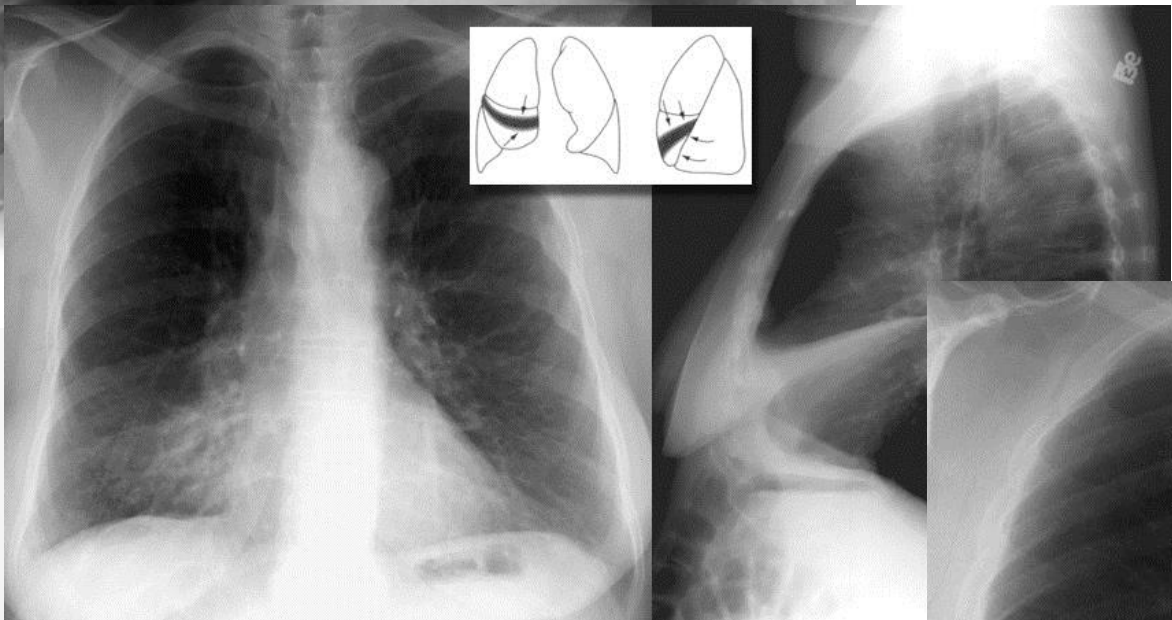
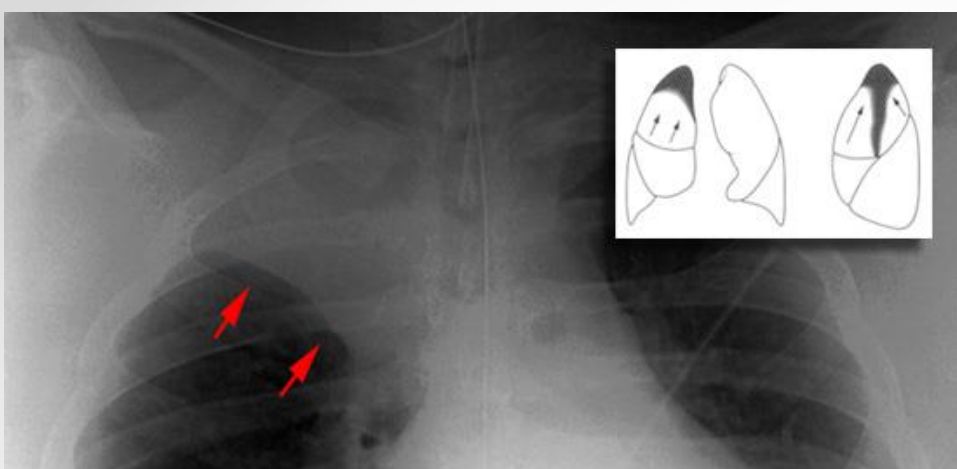
Pneumonia

Pulmonary emphysema

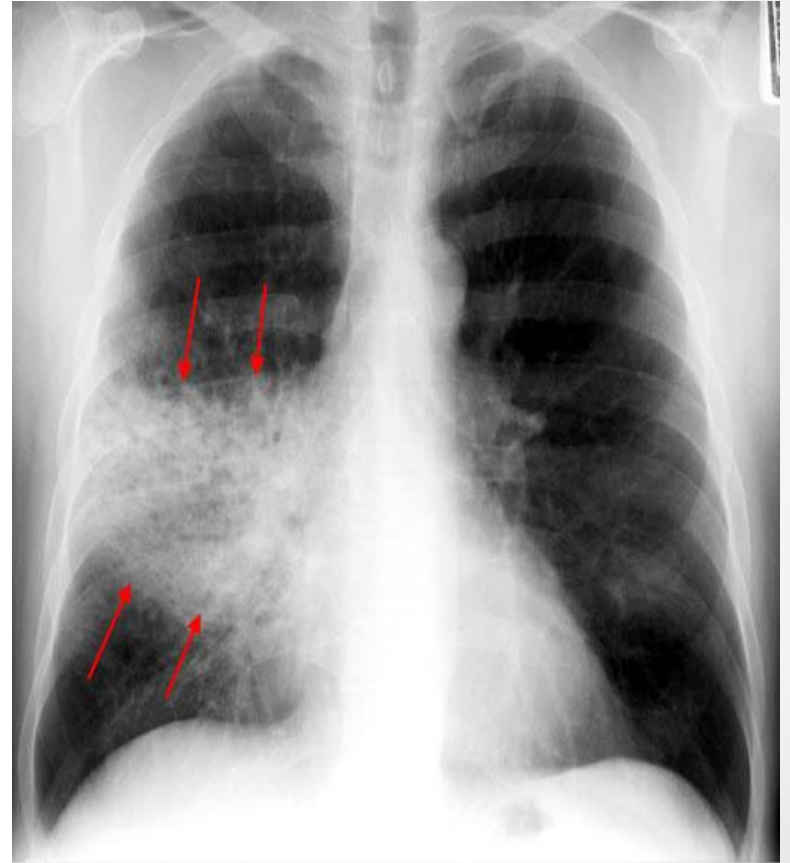
# Atelectasis – LUL, LLL



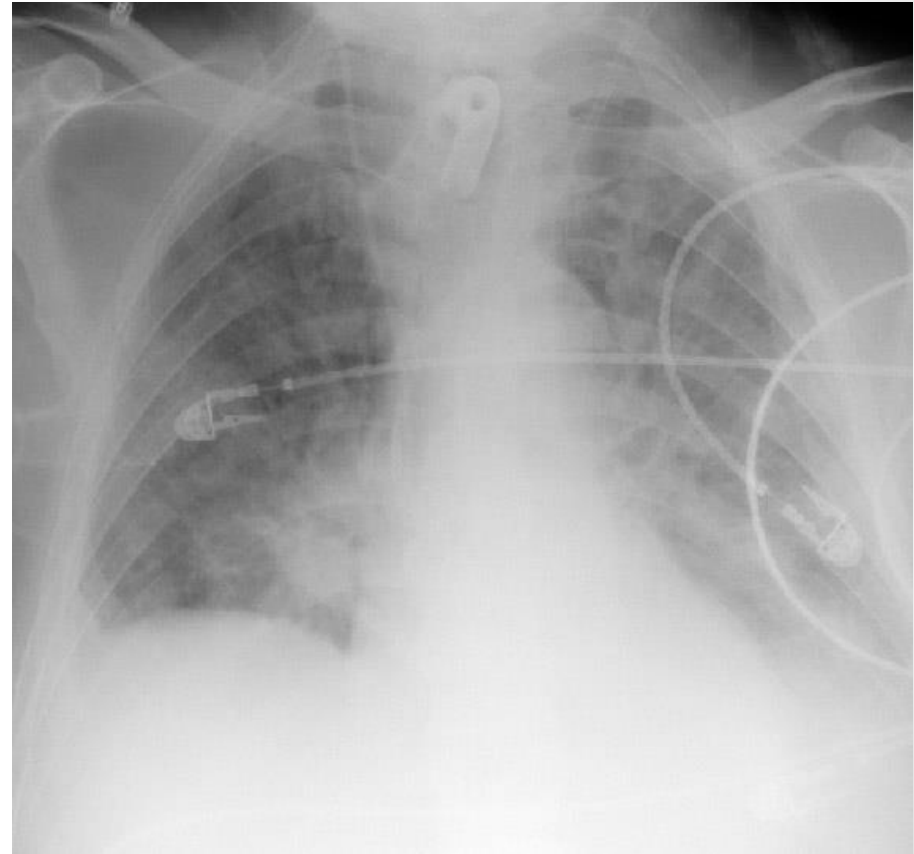
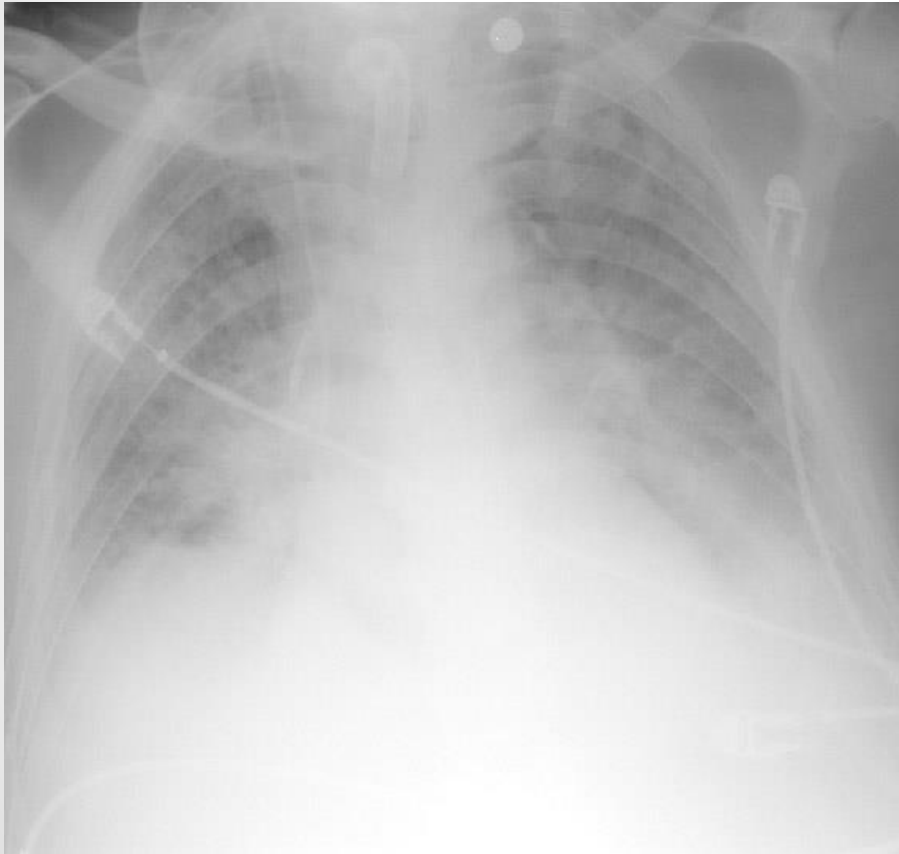
# UL, RML, RLL



# Pneumonia

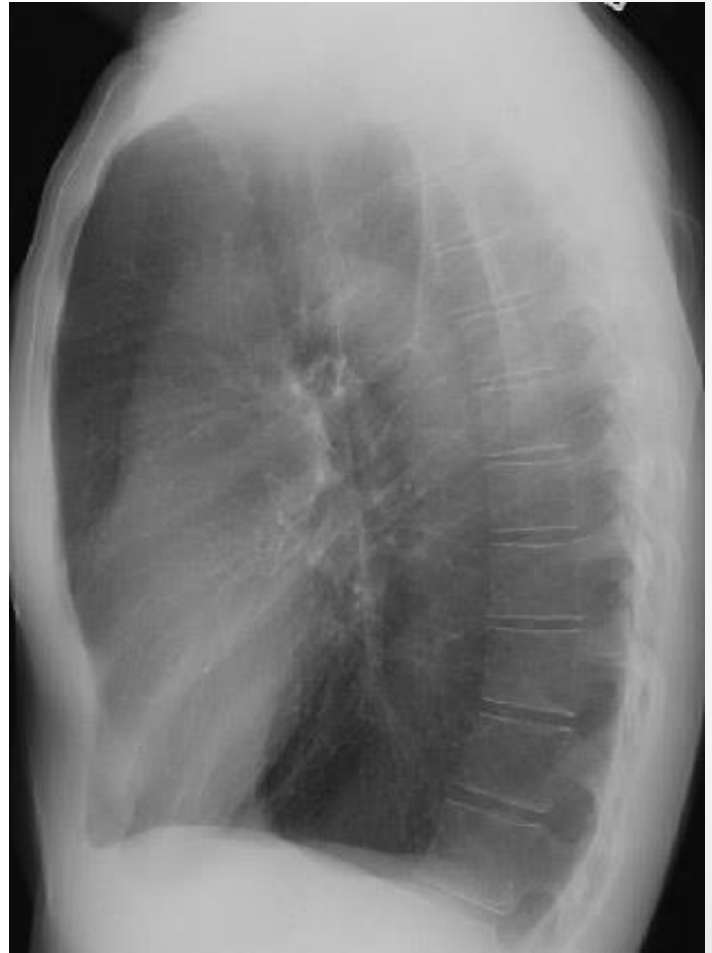


# Pulmonary Edema





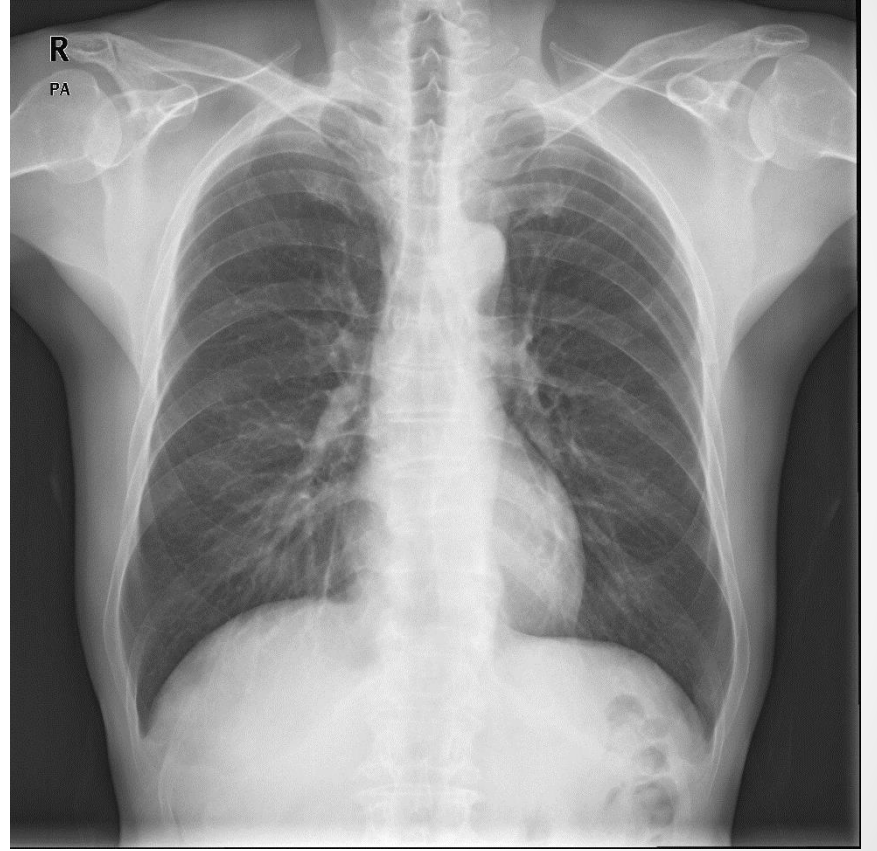
# Emphysema





# chapter 4 Mediastinum

- Anterior mediastinal mass
- Pneumomediastinum
- Pericardial effusion

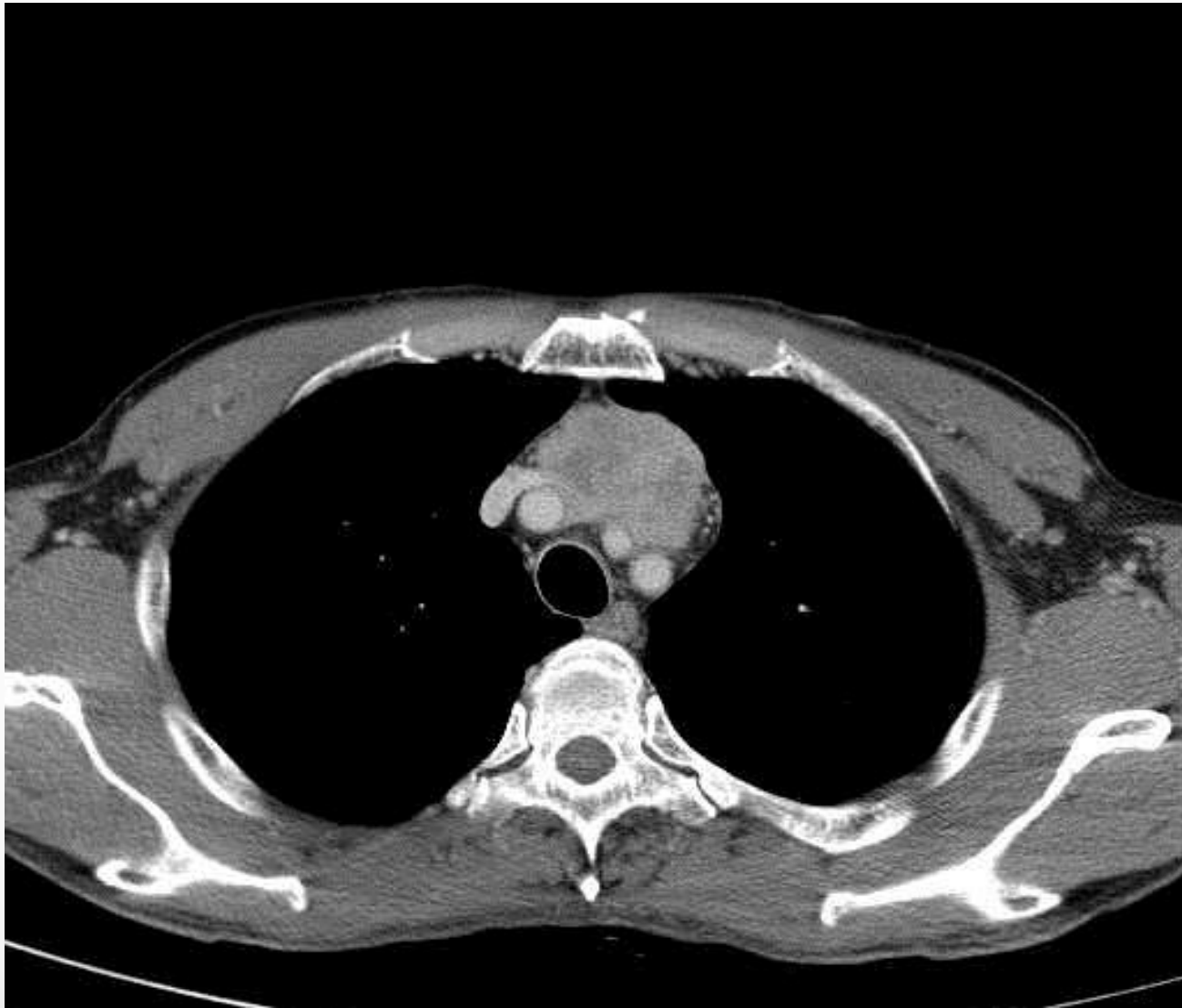


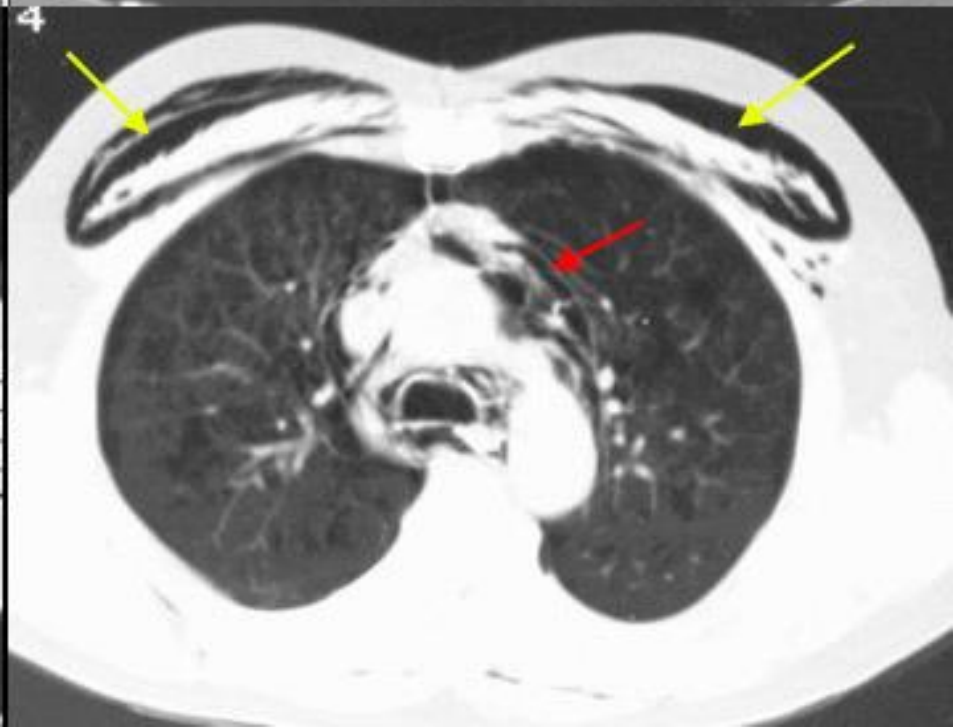
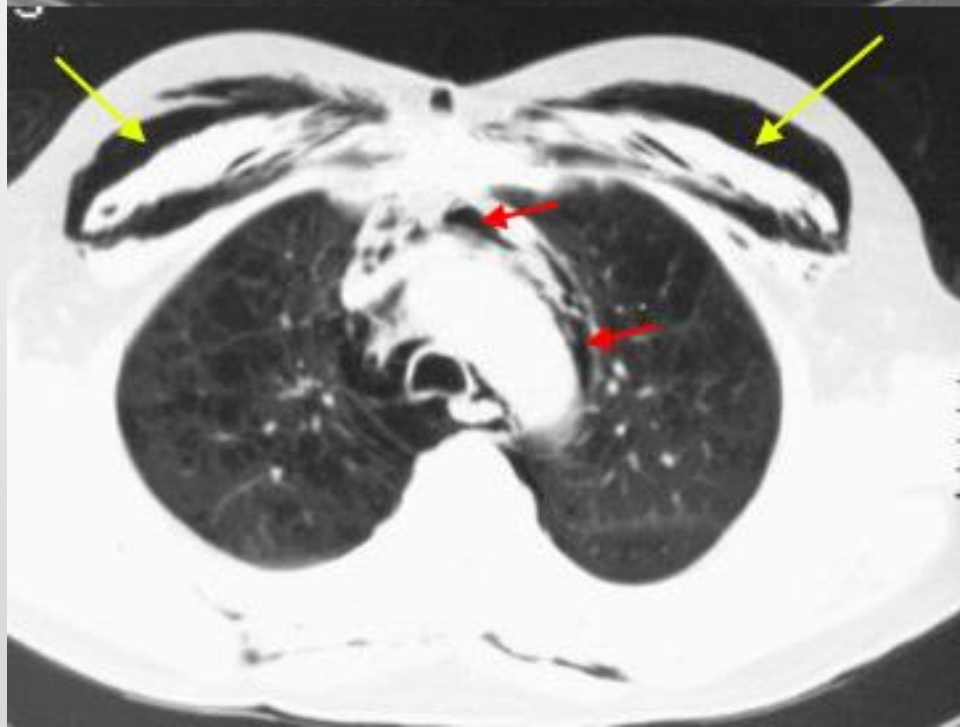
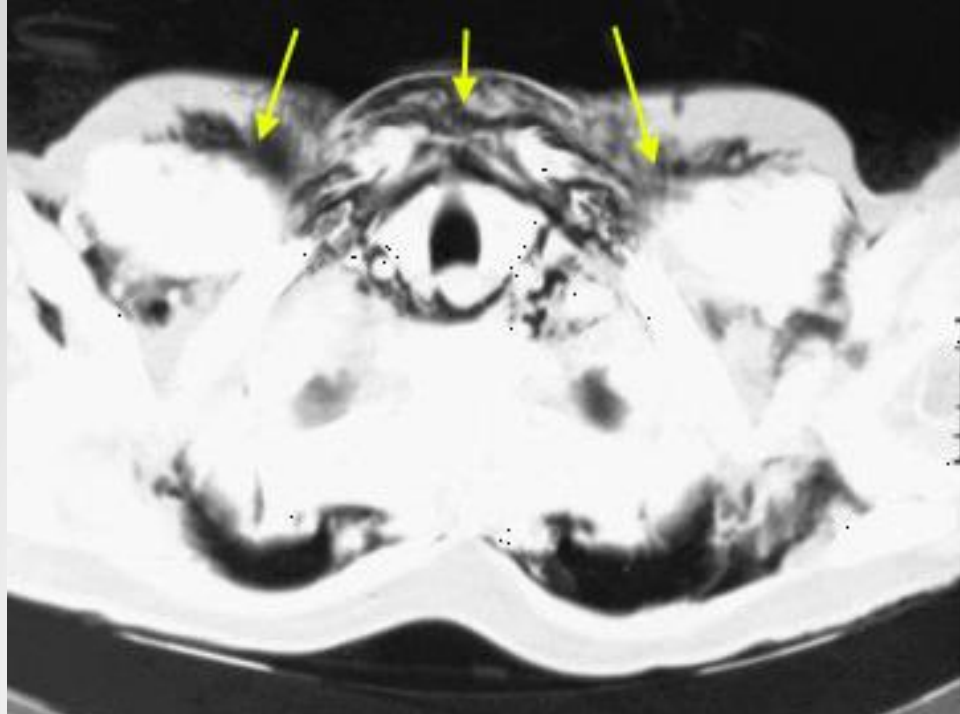
R

Lat



# Anterior mediastinal mass



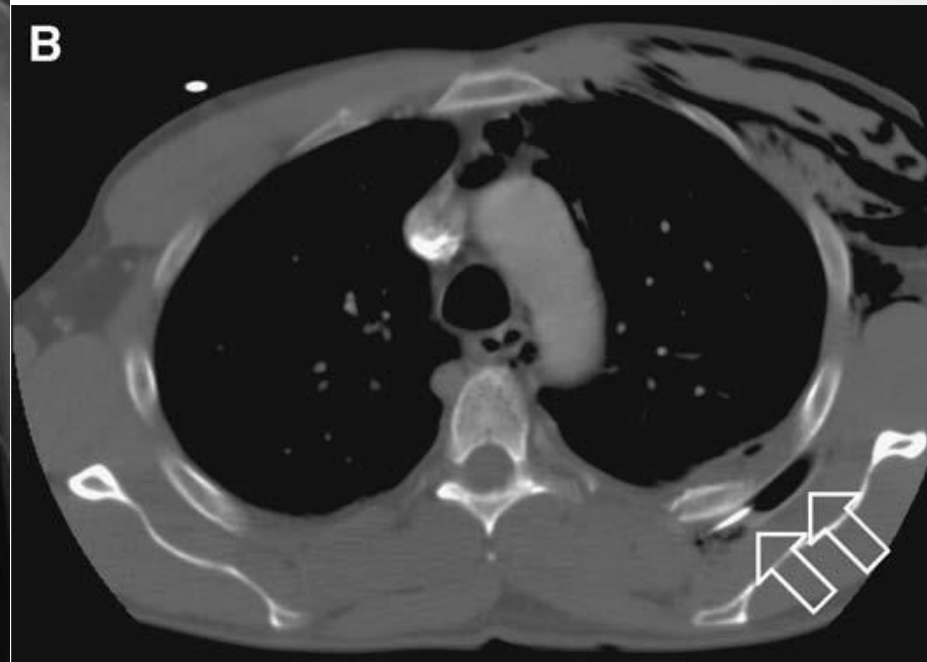
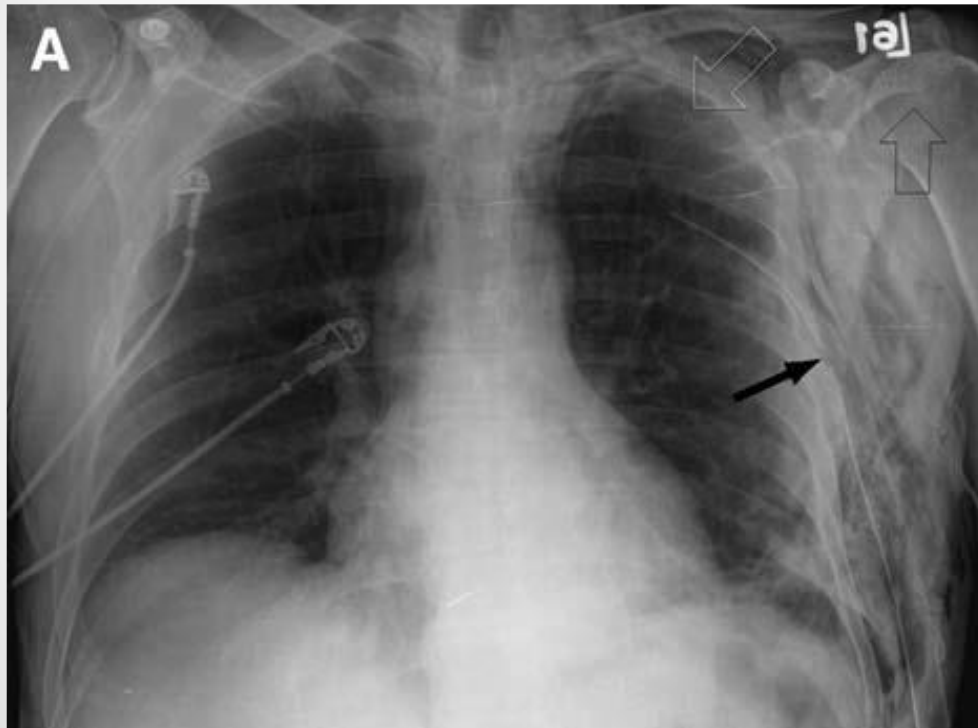


# Pericardial effusion





# Malpositioned chest tube



# @ ER

- **To have knowledge of diseases**
  - Pneumothorax
  - Rib fracture
  - Hemothorax
  - Esophageal rupture
  - Tracheal injury

# @ ICU & General Ward

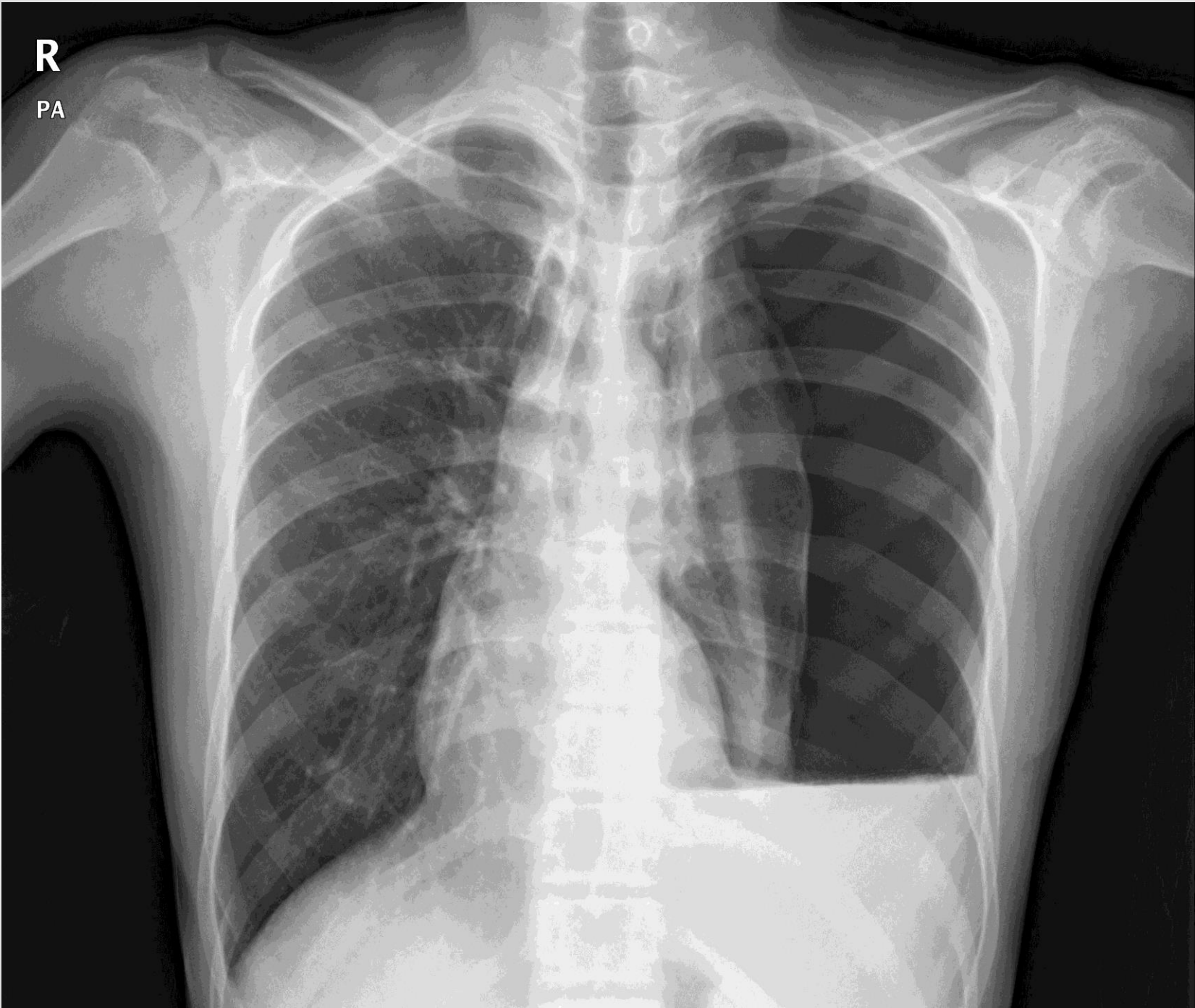
- To know possible complications
  - How to approach
  - Extent of operation
  - Events
  - Underlying disease

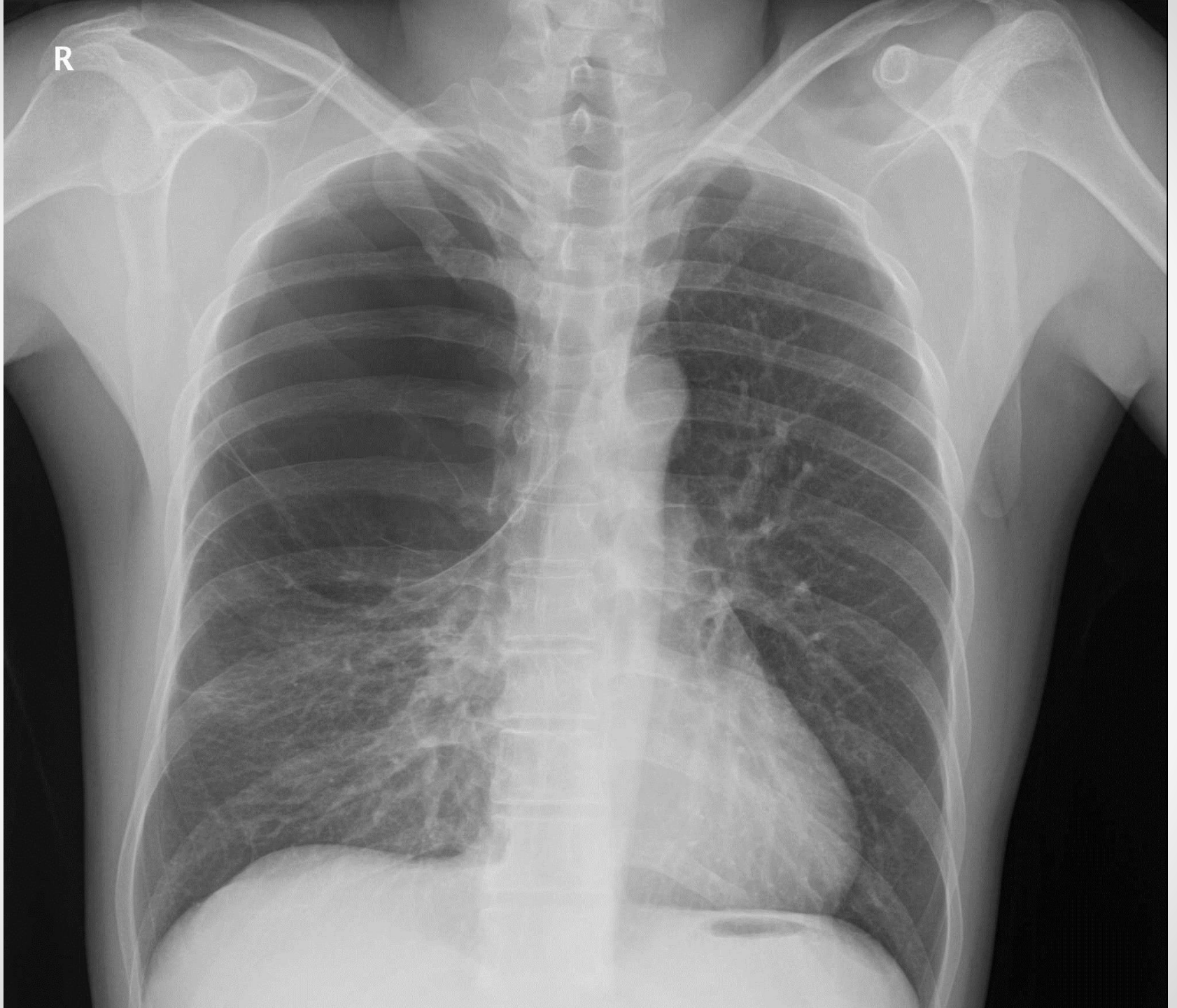
# @ ER

- M/16
- Chest pain, Rt. (1DA)
- Cough, dyspnea
- Non-smoker



R  
PA



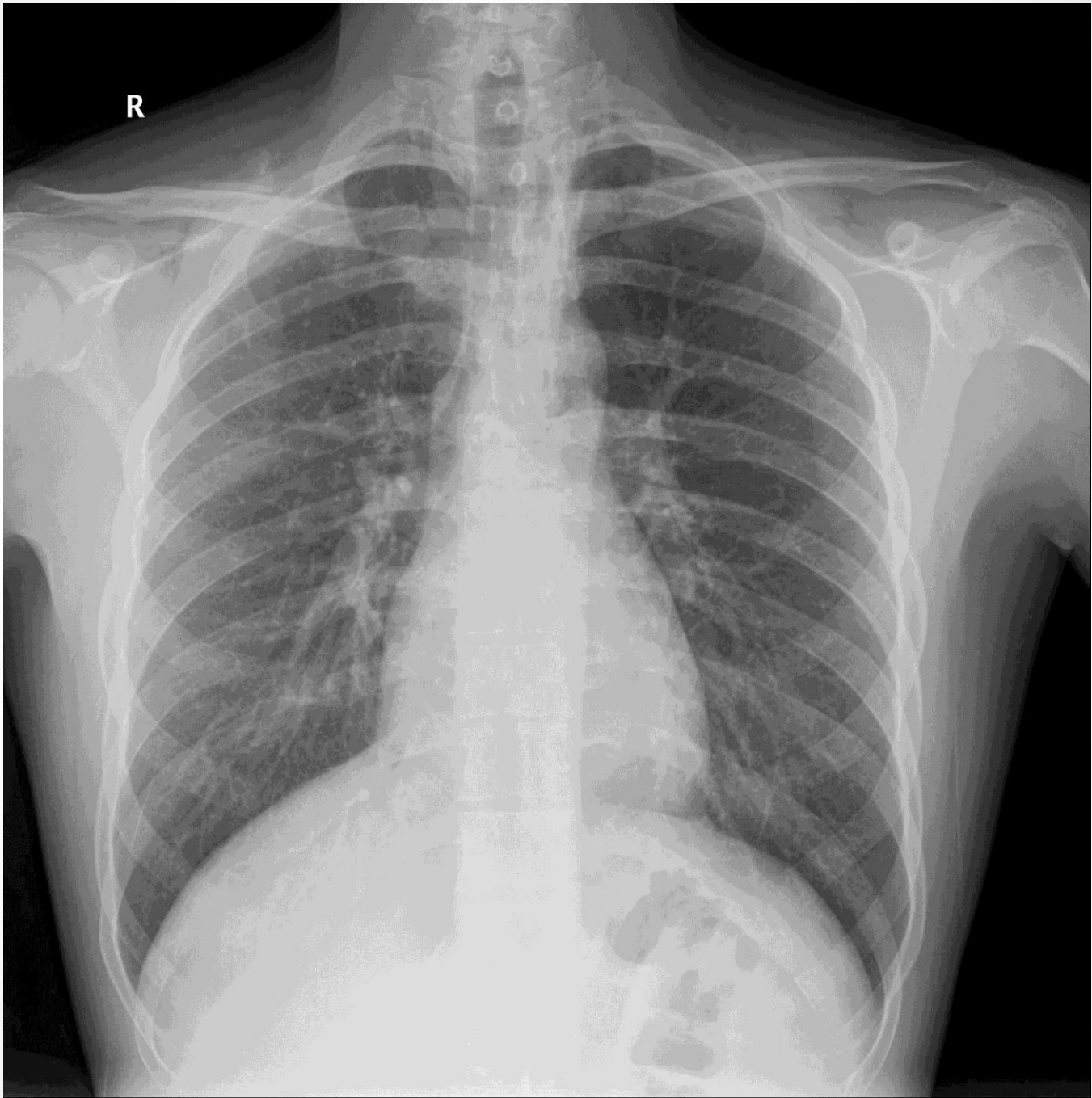


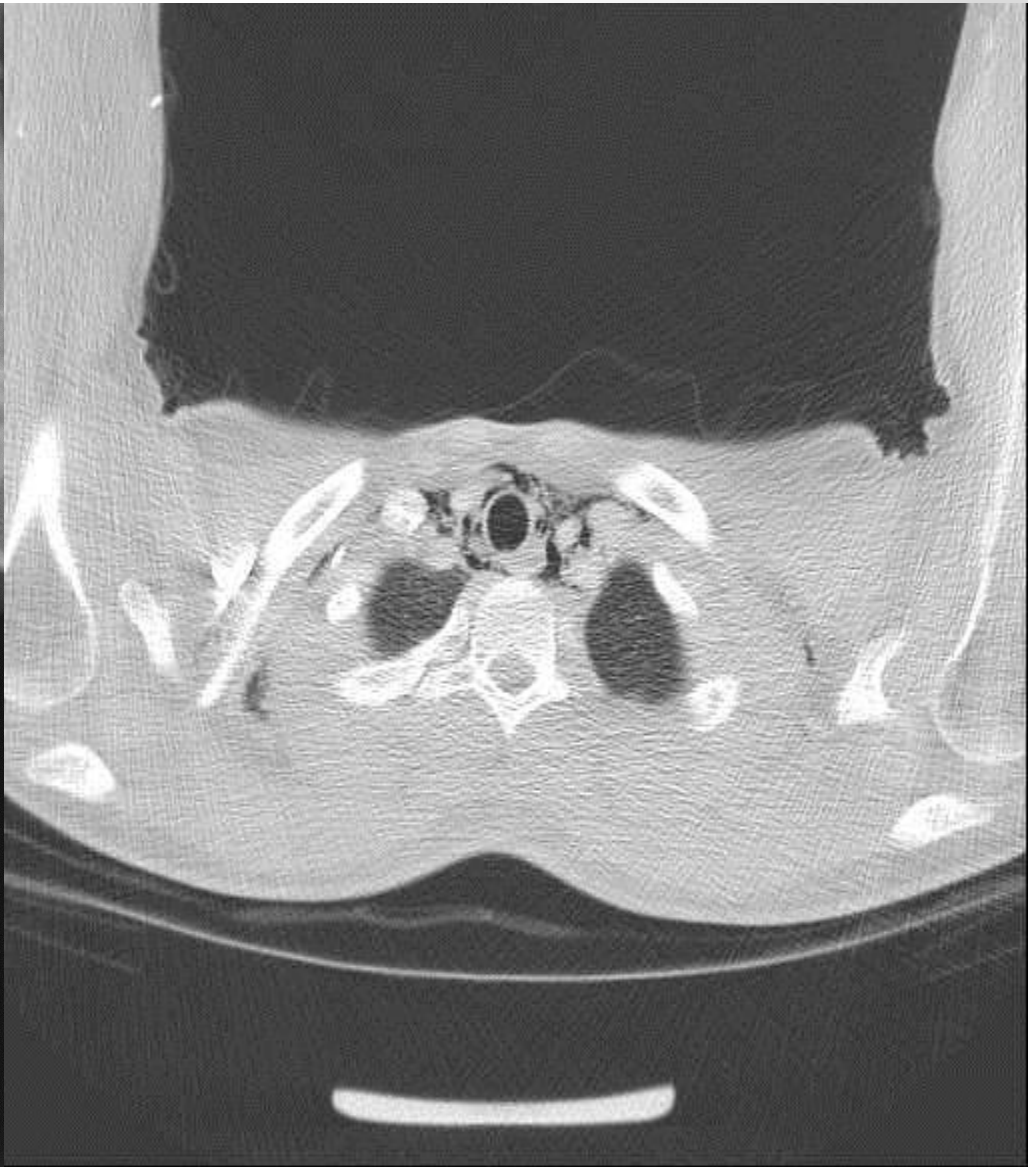




# @ ER

- M/21
- Persistent cough (3DA)
- Neck pain
- Throat pain on swallowing

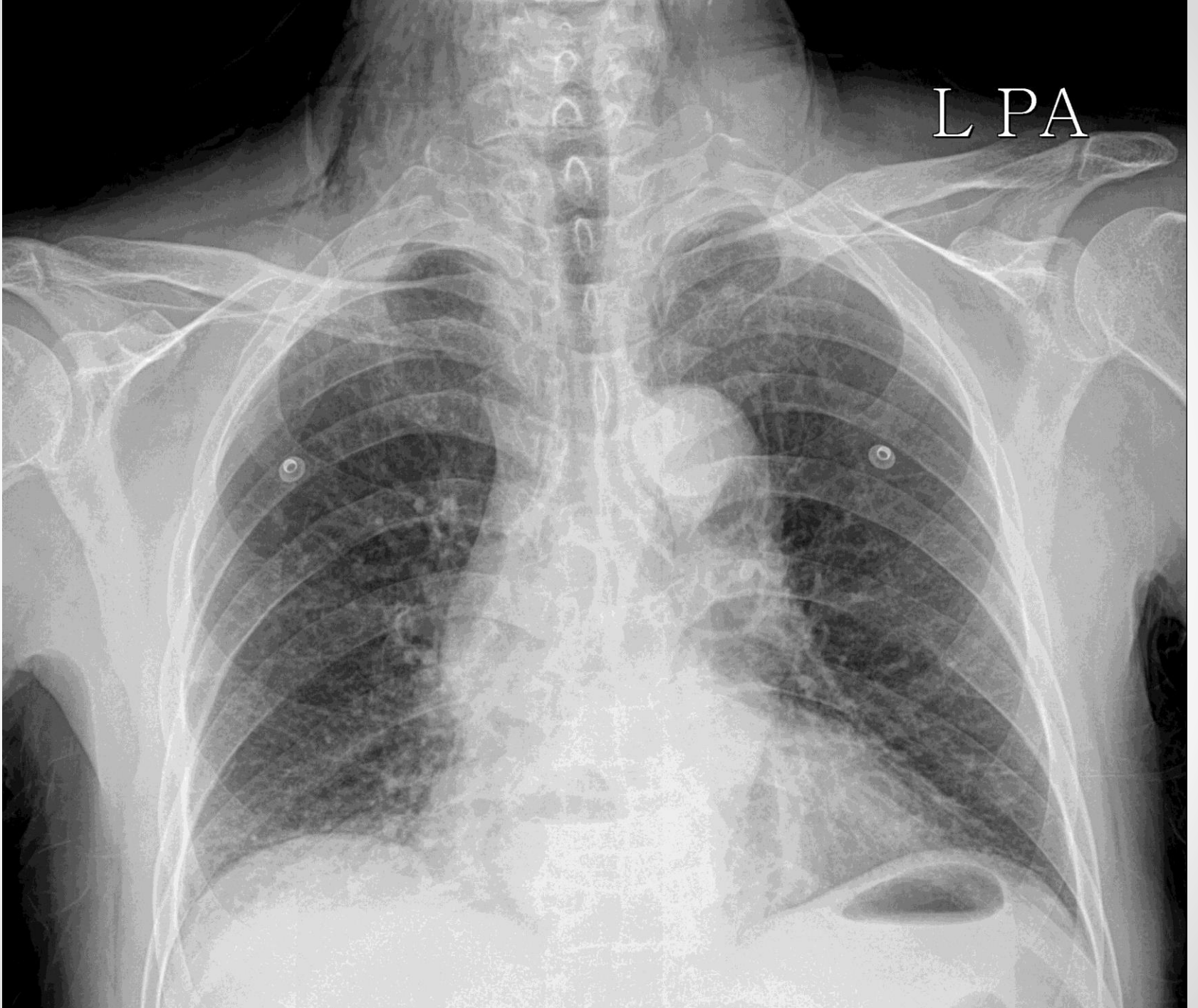


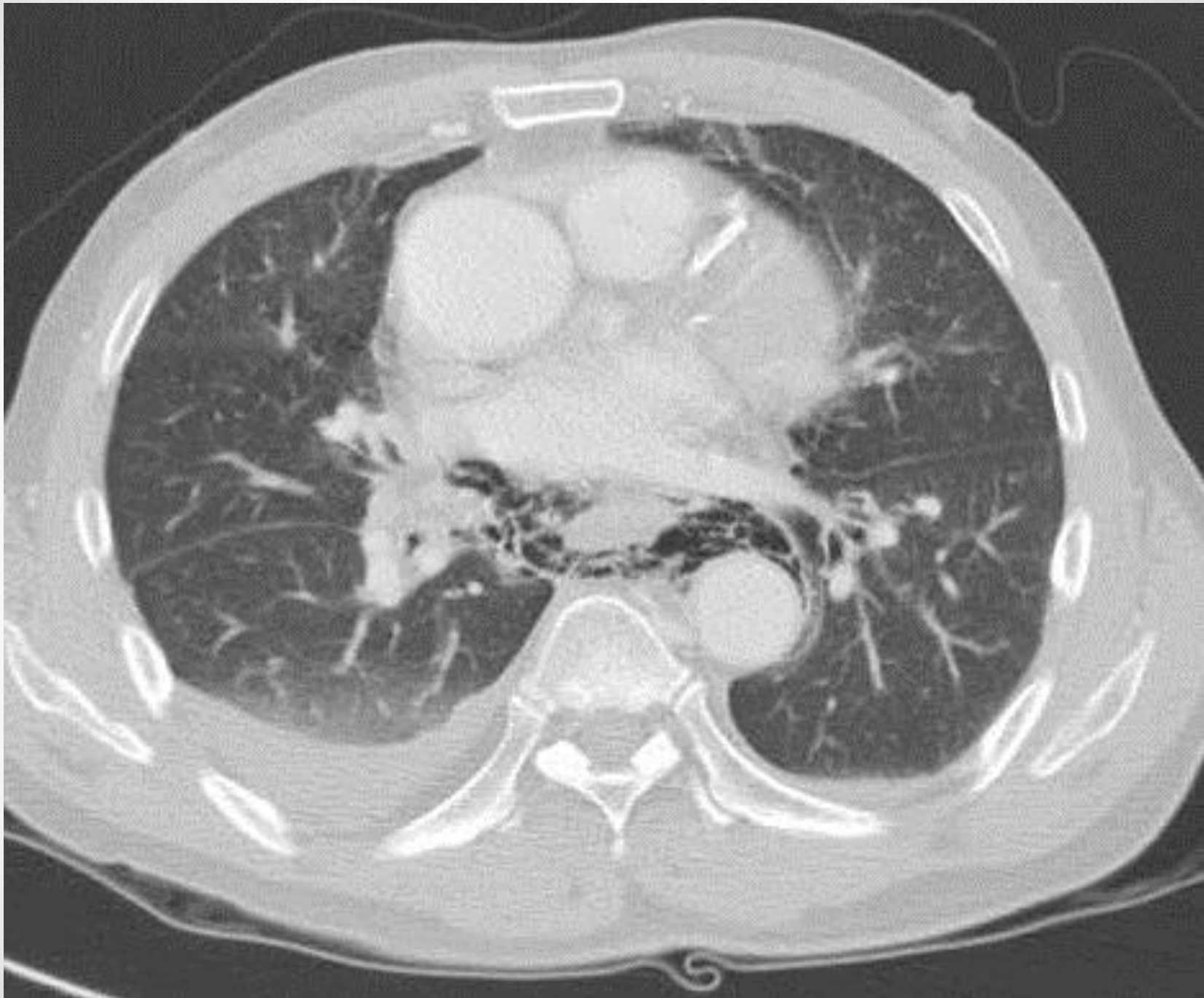


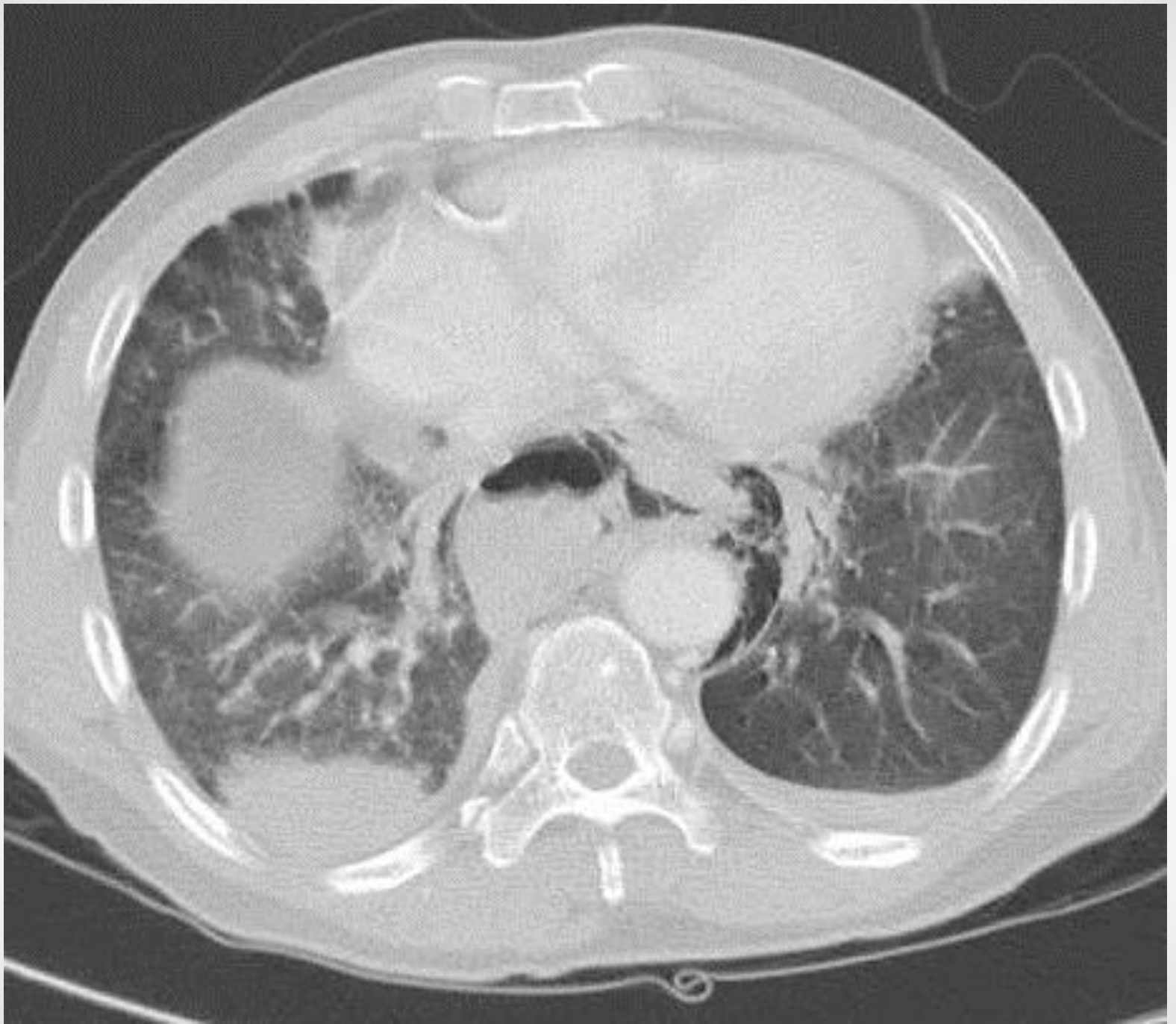
# @ ER

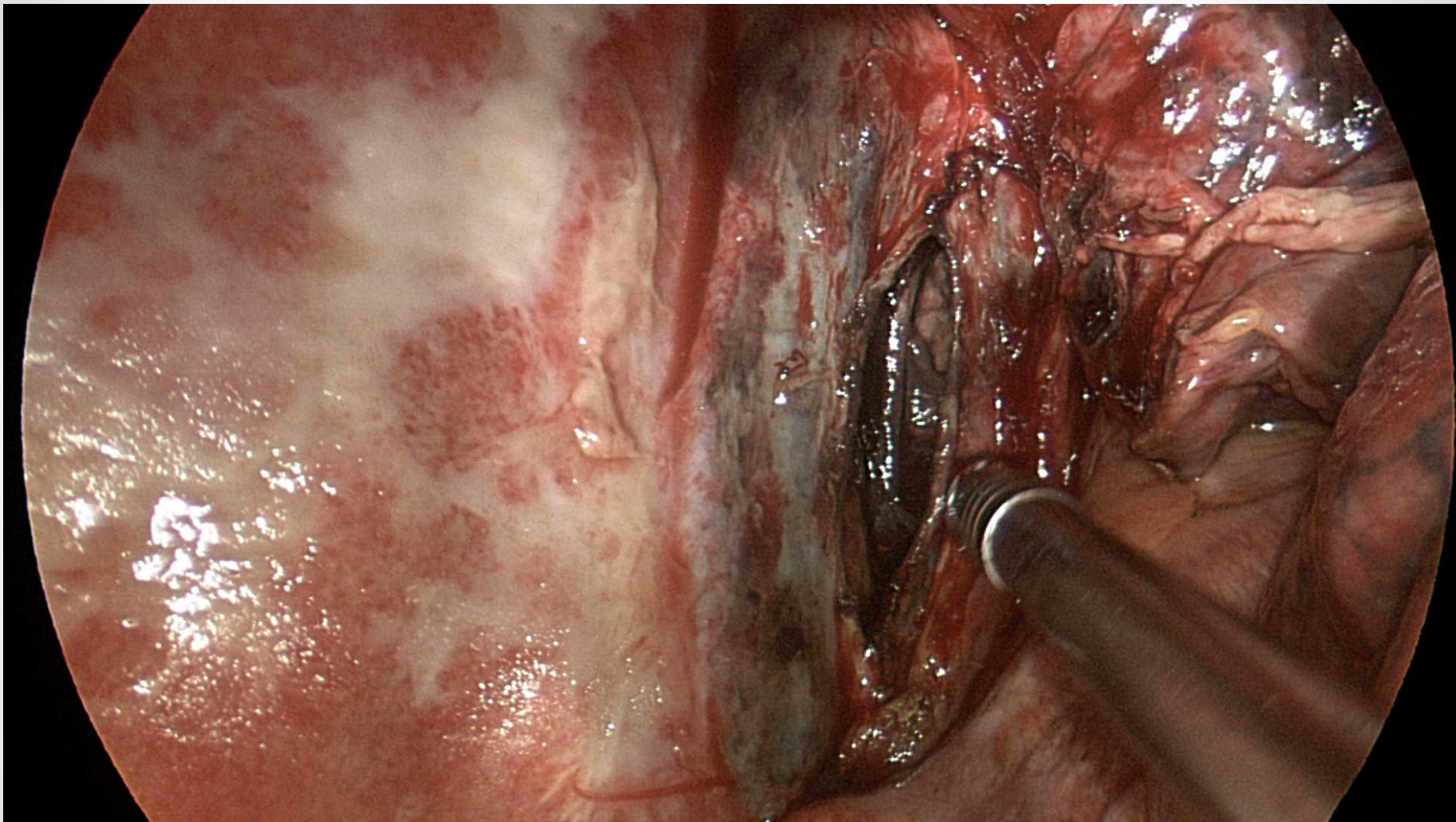
- M/56
- Abdominal pain (1DA)
- Fever/ chilling
- Heavy alcoholics
- Vomiting

L PA





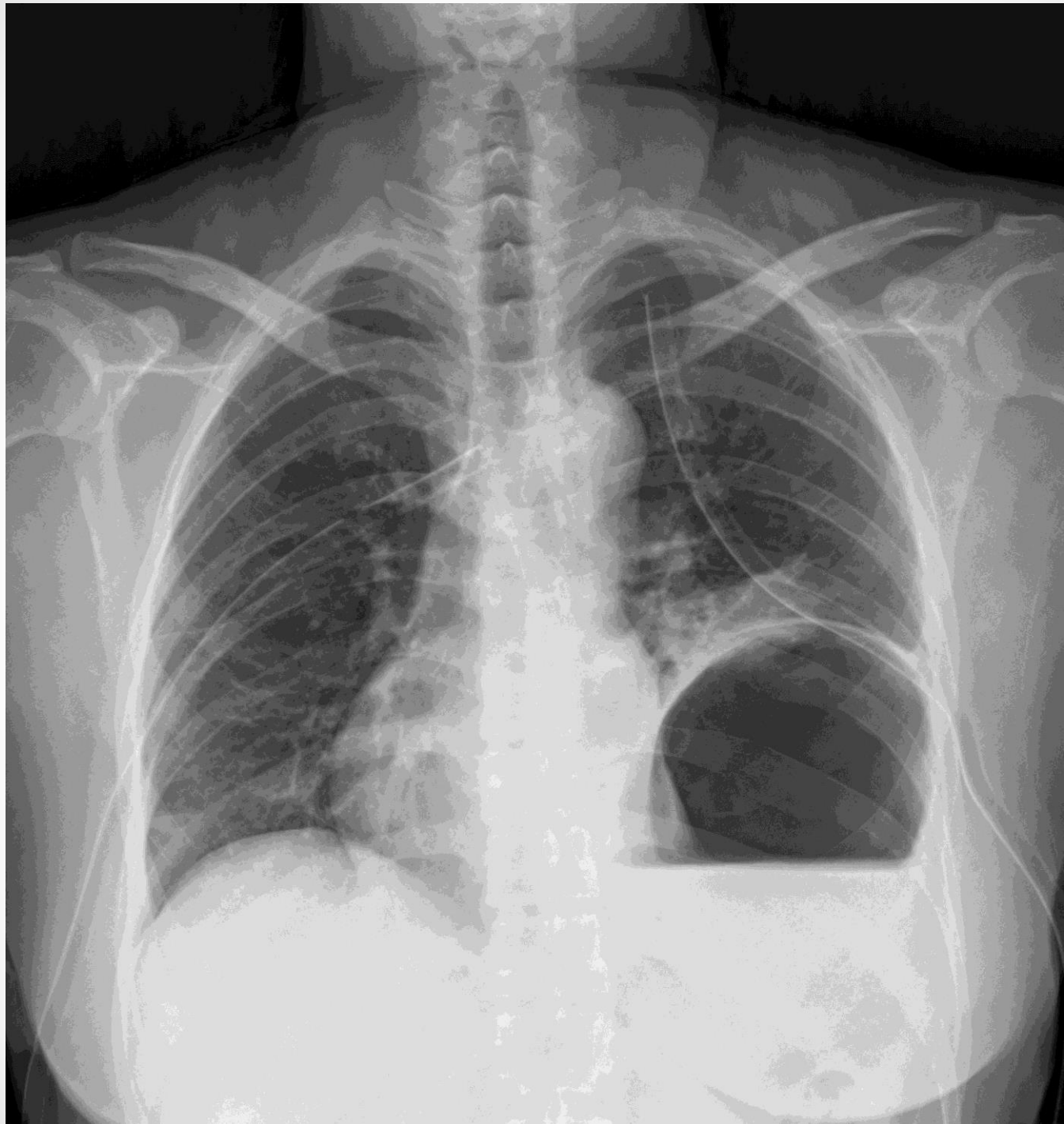


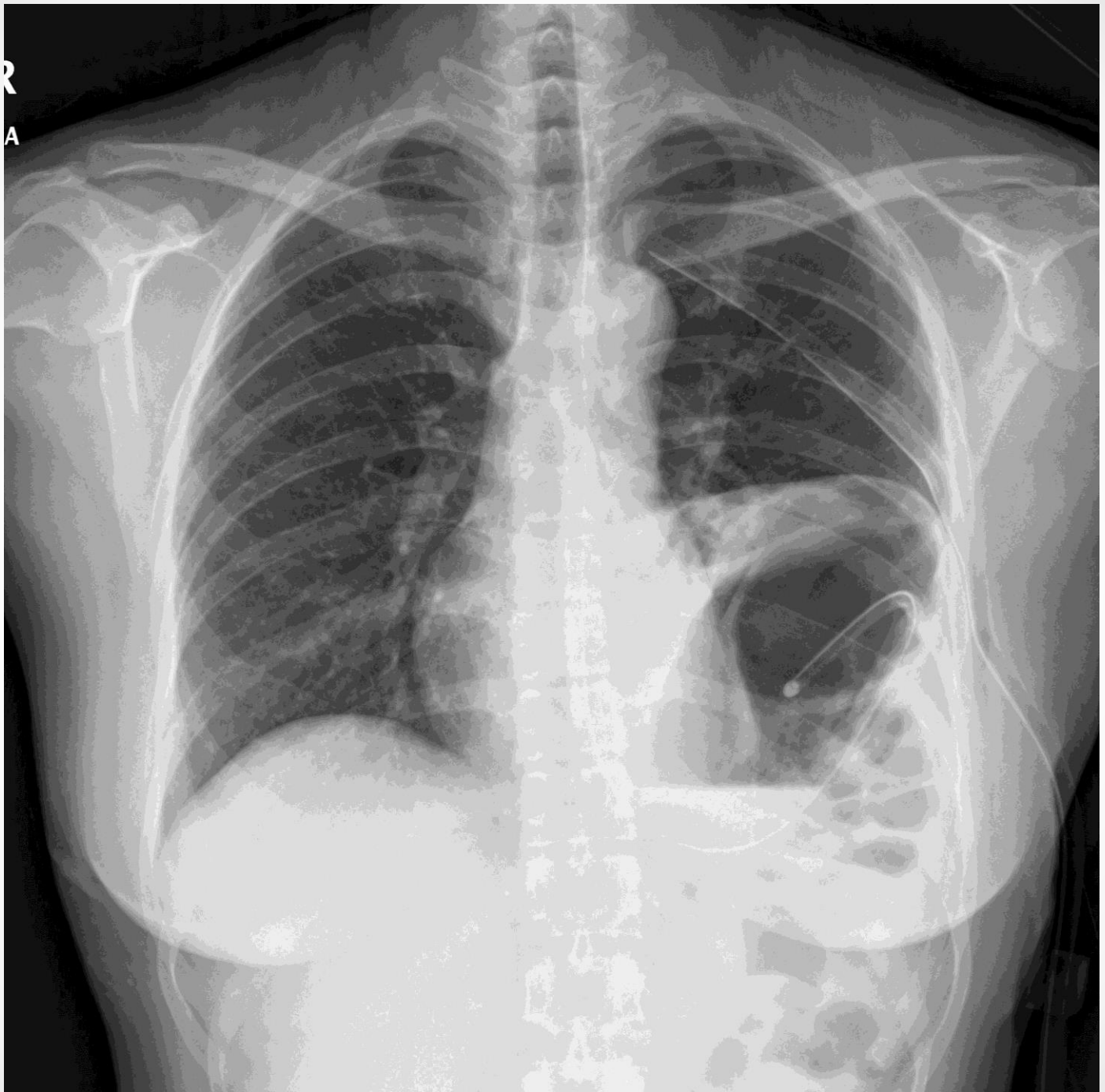




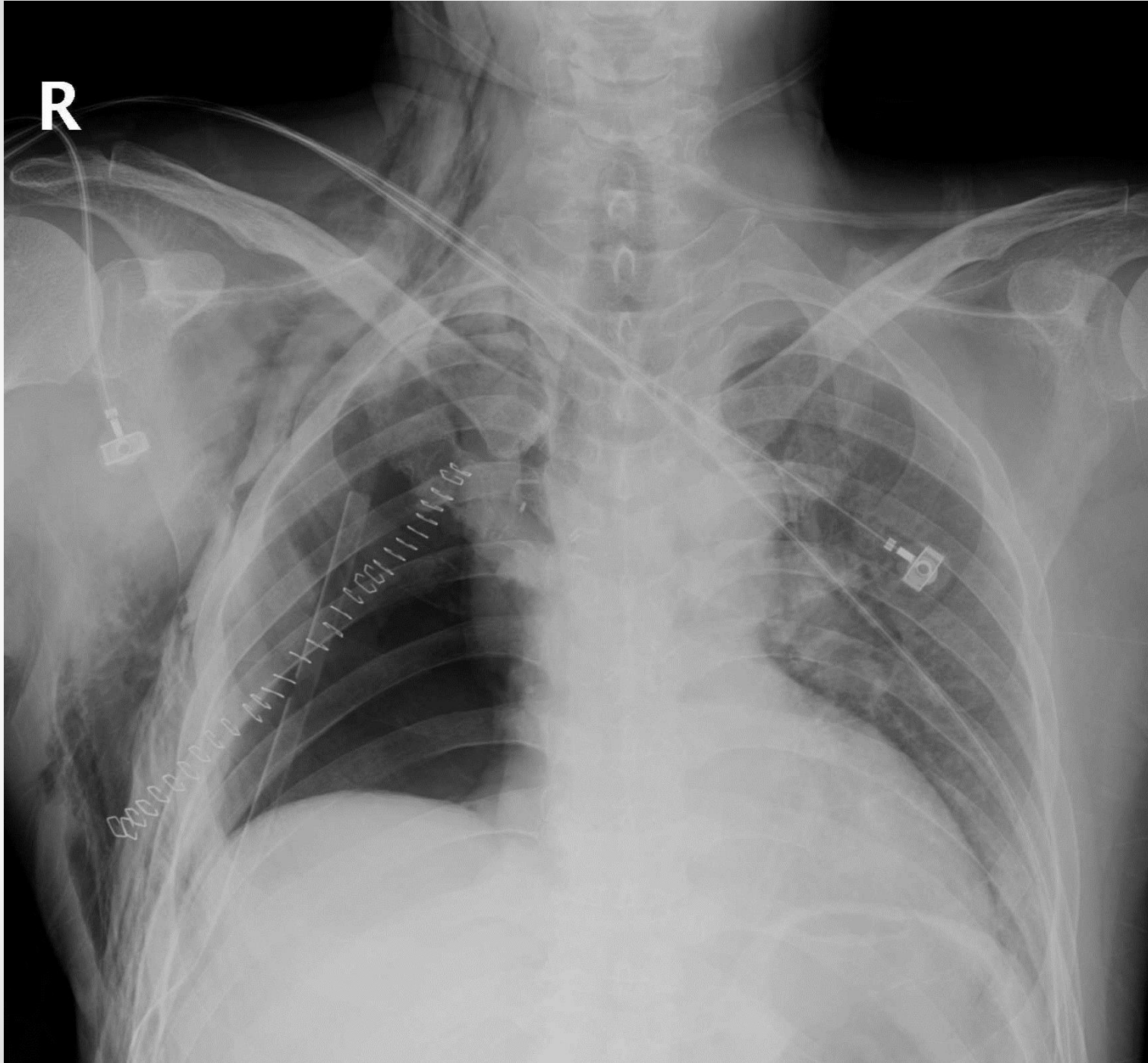
# @ ER

- M/52
- Blunt Trauma to chest
- Dyspnea
- Chest pain



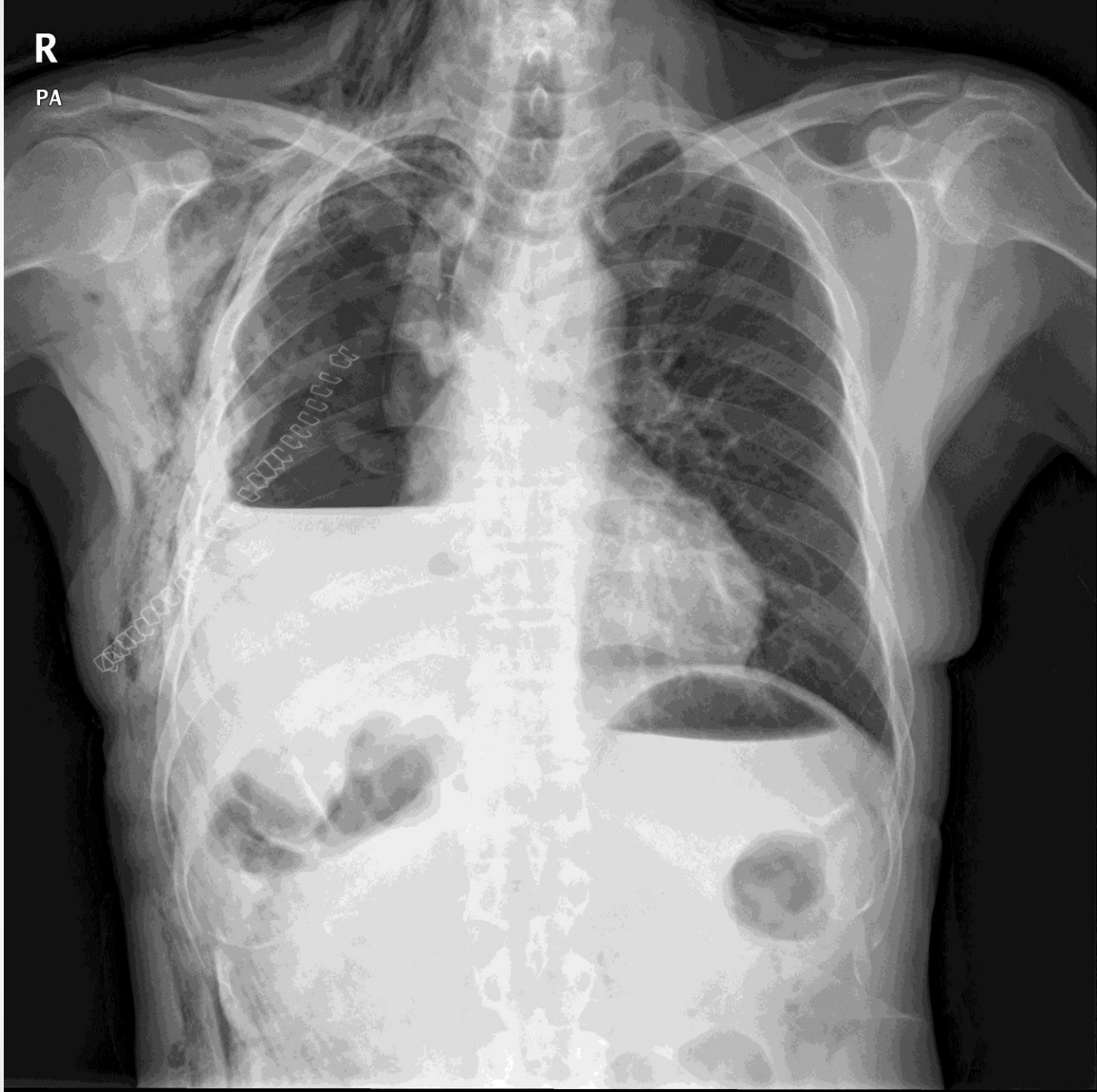


R



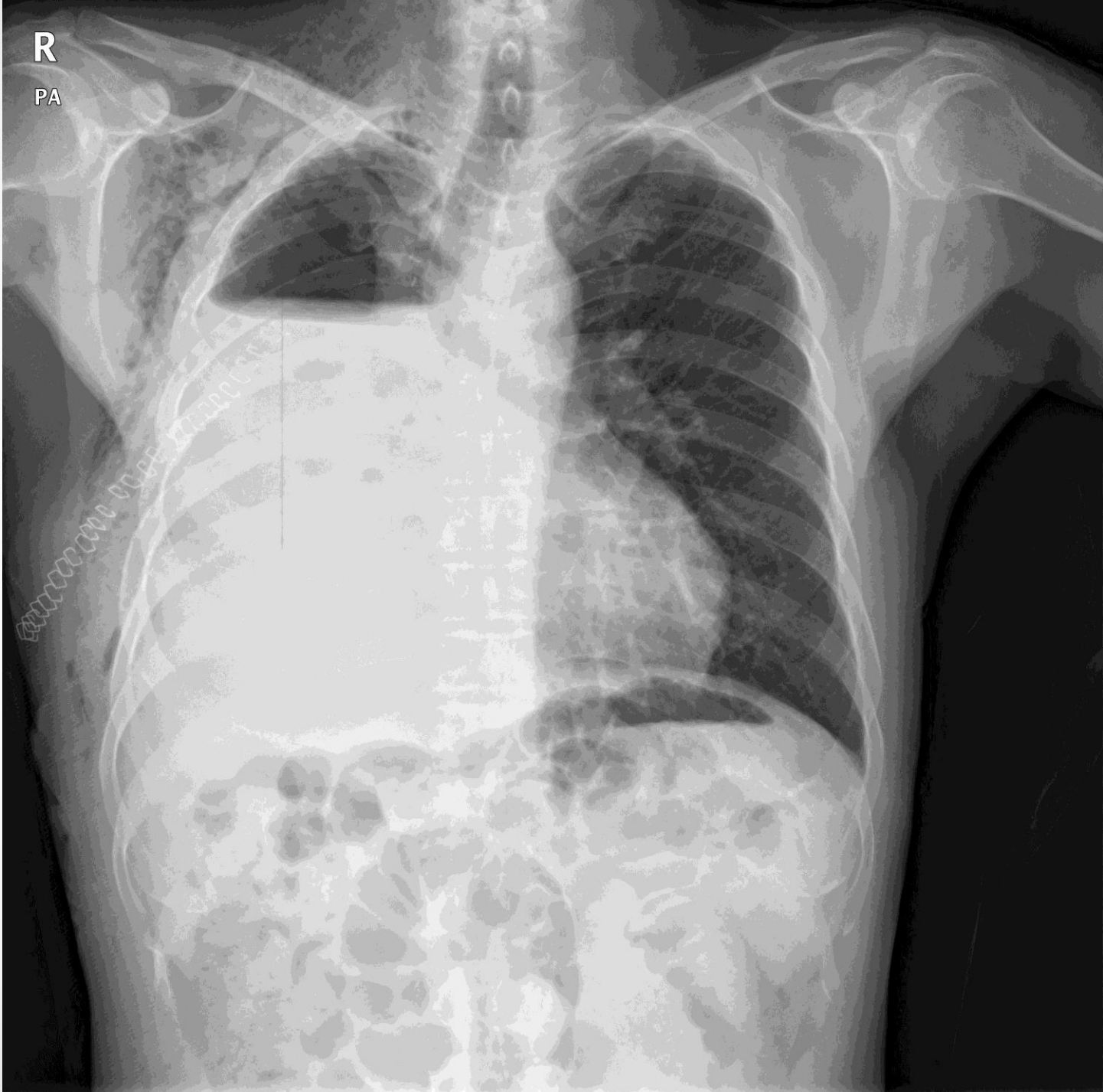
R

PA



R

PA



# @ OPD

- M/62
- s/p Rt. Pneumonectomy (2WA)
- Dyspnea, aggravation

R

PA



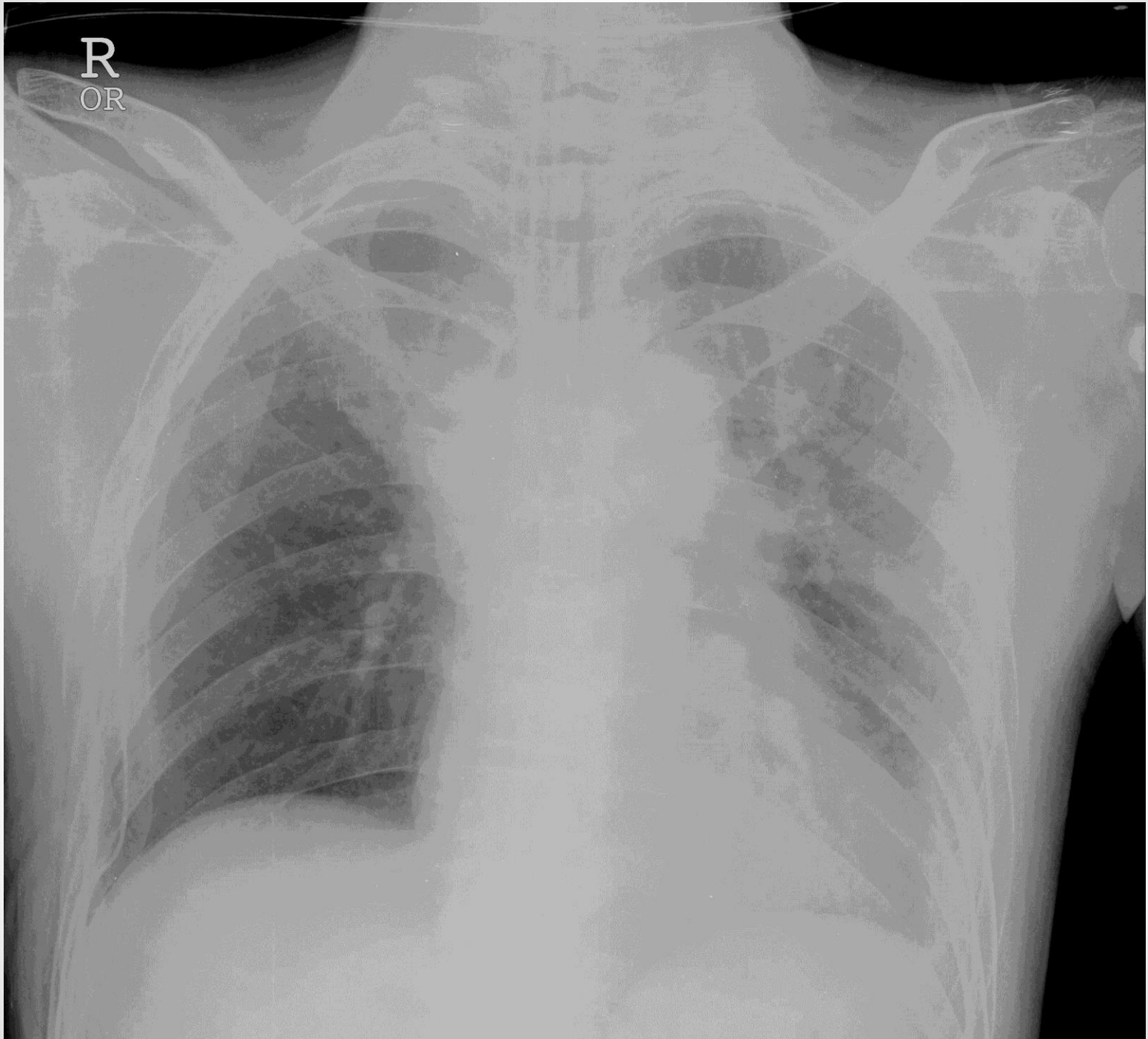






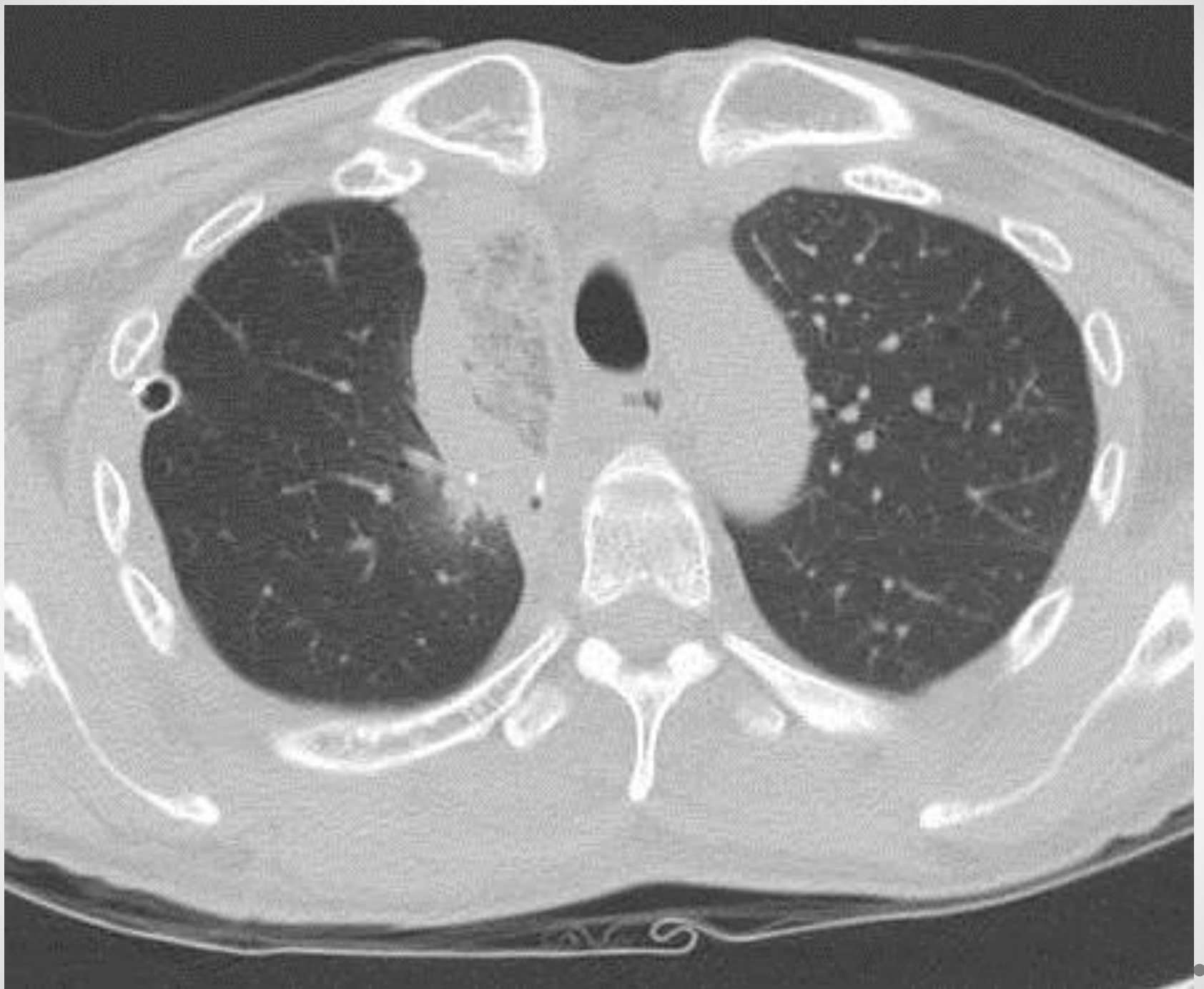
- M/58
- s/p RULobectomy, 3DA
- Dyspnea
- Tachycardia
- Fever/ leucocytosis

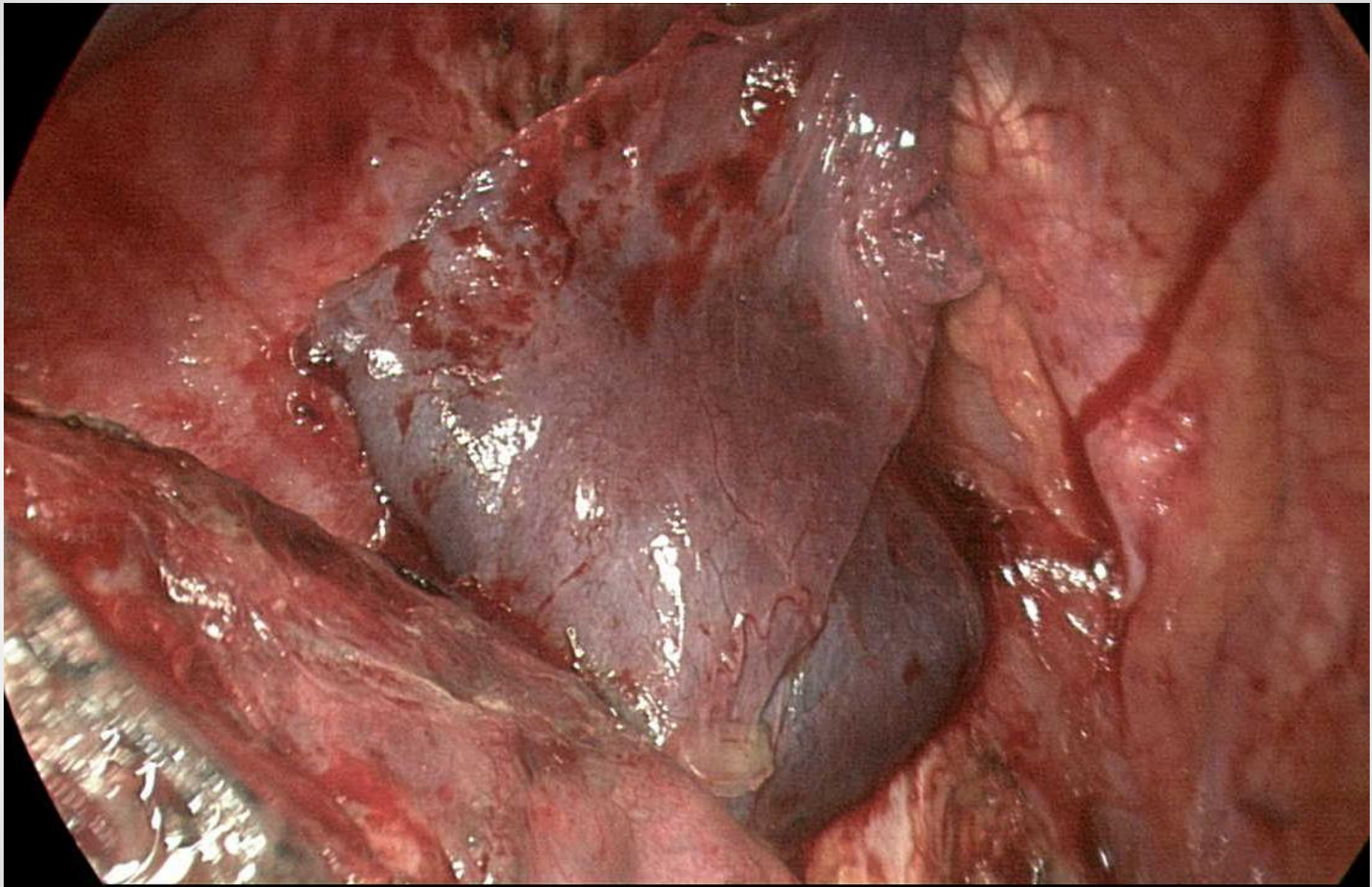
R  
OR



R







# Post-lobectomy torsion

- vs. Collapse
- After RULobectomy
- Anchoring or not
- Rapid diagnosis
- Emergent operation

# How to improve your ability

- To know events during operation
  - Review operation records
  - Review operation video
  - Ask operator/ senior assistants
- To listen carefully to your patients
  - Consistent symptoms
  - Severe symptoms
  - Frequent symptoms